

Onshore Petroleum Licensing over the Northwest Carboniferous Basin and the Clare Basin

1. The Minister of State at the Department of Communications, Energy and Natural Resources (“the Minister”) invites applications for Onshore Licensing Options to be granted under the Petroleum and Other Minerals Development Act, 1960, over the Northwest Carboniferous Basin and the Clare Basin

2. Applications must be received not later than 12 noon on Friday 11th June 2010.

3. Any Licensing Option granted on the basis of an application pursuant to this Notice will be subject to the [Licensing Terms for Offshore Oil and Gas Exploration, Development and Production 2007](#) (“the Licensing Terms”) issued by the Minister together with the provisions detailed in this Notice.

4. Specific Terms

4.1 Areas of Application

The acreage available is specified on the attached townland listing (Attachment I) and maps (Attachment II). Where a boundary of the available acreage is represented by coastline, such boundary will be taken as the ‘High Water Mark’.

Applications should be principally for reasonably regularly shaped, continuous areas and confined to the acreage specified. An exception will apply to the Clare Basin where a single application may be made for acreage on both sides of, and immediately adjacent to, the Shannon estuary. The boundary of any authorisation awarded on foot of an application will be defined in terms of townlands rather than coordinates, see also Section 5.2 (a).

Each application should clearly indicate that part of the area being applied for, which is of highest priority to the applicant.

The applicant is also referred to the 2003 1:100,000 scale bedrock geology maps (<http://www.gsi.ie>), relevant ordnance survey maps (<http://www.osi.ie>) and information on Special Areas of Conservation (<http://www.npws.ie>). For information on available petroleum exploration data (well, seismic etc.), the applicant is referred to <http://www.pad.ie>.

4.2 Duration

Any Licensing Options awarded will be valid for a period of up to a maximum of 24 months and may not be extended. Subject to this maximum period the actual period of the Licensing Option will be determined by the work programme agreed with the Minister.

Option-holders will be required to hold a Petroleum Prospecting Licence for the full duration of the Licensing Option.

4.3 Exploration Obligations

Each Licensing Option shall be subject to the performance of a work programme agreed with the Minister, which shall include in respect of the area covered by the Option:-

- (a) Procurement of all available and relevant technical data and studies.
- (b) New geological/geophysical studies and data acquisition projects, as considered necessary. The work programmes will not include drilling, but may include shallow geological sampling where subsurface penetrations would typically not exceed 100-200m.
- (c) The option-holders will submit, no later than three months prior to the expiry of the Option, an integrated assessment of the petroleum resource potential of the area together with strategies, scoping economics and costed plans for further exploration / exploitation.
- (d) The option-holders will propose, no later than two months prior to the expiry of the Option, a detailed work programme for any follow-up authorisation(s) i.e. Petroleum Exploration Licence(s), for the approval of the Minister, which will include a drilling commitment/commitments.

In considering any application by an option-holder for a follow-up authorisation, the Minister will have particular regard to the work programme, the resources available to the applicant at that time and the quality and conclusions of the integrated assessment at 4.3 (c) above. It should not be interpreted that the award of an Option will automatically entitle the option-holder to an Exploration Licence without adequate technical and financial competence being displayed, or entitle the option-holder to a single Exploration Licence over the full area of the Option.

5. **Work Programme**

5.1 Licensing Options will be awarded on the basis of the award criteria specified at paragraph 6.1, with particular emphasis placed on the proposed work programme's appropriateness for evaluating hydrocarbon prospectivity. Applicants are required to demonstrate that, if granted a Licensing Option, they will have the technical and financial capacity to undertake the work programme.

5.2 Each application shall include:

- (a) A statement describing the area to which the application applies, outlined on a suitably scaled map such as the attached, accompanied by a GIS shape file or digital listing of the coordinates and coordinate system used to define the application outline, together with the calculated total area in square kilometres.
- (b) Information as to the geological, geophysical and other data upon which the application is based, accompanied by a comprehensive technical assessment of this data.
- (c) A detailed description of the work programme which the applicant proposes to carry out including timelines and a budget.
- (d) Statements as to the applicant's organisational and operational structures, technical competence and financial competence for effecting the proposed work programme.
- (e) A statement of the applicant's policies on health, safety and the environment.

6. **Award Criteria**

6.1 In considering an application the following scoring system will apply:

- (a) The overall approach proposed – 10 Marks.
- (b) The quality of the work programme proposed by the applicant (marks will only be awarded for firm commitments made) – 40 Marks.
- (c) The demonstrated technical competence and experience of the applicant – 25 Marks.
- (d) Demonstrated financial capacity to fund the work programme proposed – 25 Marks.

- 6.2 Where relevant, previous performance by the applicant under any authorisations to which the applicant has been a party may be taken into account.
- 6.3 Applicants must achieve a pass mark of 60% in the case of a, b and c at 6.1 above and must also demonstrate that they have the financial capacity to fund the work programme offered.

7. **Competing Applications**

Where competing applications of an acceptable quality are received for the same area, the Minister reserves the right to suggest moving forward on the basis of the two applicants coming together to perform a single work programme to be agreed with the Minister, or to offering both applicants a Licensing Option over a revised area.

8. **Timelines**

Applicants may be called for interview by the Department to clarify their proposals, prior to any decision to award authorisations. Interviews will take place during the week commencing 21st June 2010. The aim is to make decisions on applications by end July 2010.

9. **Extent of any authorisation awarded**

On the basis of the information supplied at 5.2(a) above, the Department will generate a map and listing of the townlands wholly and partly contained within the area outlined and will request that this information is verified by any successful applicant(s) as suitably representing the area applied for. It should be noted that the size of the total area covered by the townlands, which will be used to define the extent of any authorisation, is likely to exceed, somewhat, the size of the area originally indicated by the applicant.

10. **Applications**

10.1 Applications should be marked 'Onshore Petroleum Licensing - Northwest Carboniferous Basin and Clare Basin' and should be addressed to, "The Secretary General, (For attention of Jim Whelan) Department of Communications, Energy and Natural Resources, Petroleum Affairs Division, 29-31 Adelaide Road, Dublin 2, Ireland".

- (a) Each application should be submitted in two parts, corresponding to the information to be provided under Section 10.2 (two hardcopies and one digital copy required) and Section 5.2 (three hardcopies and one

digital copy required) respectively of this notice. (A total of two hardcopies of material under Section 10.2 will suffice where more than one application is being made by the same participant).

- (b) The receipt of an application will not create an obligation on the part of the Minister to grant a Licensing Option in respect of part or all of the area that is the subject of the application.

10.2 An application shall provide (in the case of an application made by a group of companies, in respect of each participant):

- (a) The full company name, registered address, billing address, and contact details of the applicant including details of the person who will serve as liaison with the Irish authorities;
- (b) A copy of the charter or constitution of the applicant;
- (c) Information concerning the applicant's place of registration, its principal place of business, its board of directors, its share capital and shareholdings;
- (d) Information as to the form of the organisation, including, details of parent, subsidiary and group companies;
- (e) Annual reports for the past two years together with copies of annual accounts including balance sheets and the profit and loss accounts for the same period;
- (f) Information as to the manner in which exploration and development activities are to be financed and performance guaranteed;
- (g) Confirmation that the applicant is chargeable, in accordance with the laws of Ireland, to tax in respect of profits and gains arising from, or connected with, exploration or exploitation activities carried out in a designated area or from exploration or exploitation rights;
- (h) Information concerning the applicant's previous experience in exploration for and exploitation of petroleum, including experience relevant to any non-conventional plays (e.g. shale gas, tight gas sand) which may be the subject of the application;
- (i) Information concerning any authorisation previously issued by the Minister to the applicant or to which the applicant was a party;

- (j) A statement detailing the applicant's policy towards health and safety; and
- (k) A statement detailing the applicant's policy towards the environment.

For applications with more than one participant, the percentage interests must be clearly outlined.

11. **Application Fees**

A non-refundable fee of €1,520 is payable with each application.

12 **Request for clarification**

Until 14th May 2010, prospective applicants may request clarification on aspects of this invitation by email to Des.Byrne@dcenr.gov.ie. A copy of all questions asked and the Department's responses will be posted on the Department's website. Details of the party seeking the clarification will not be posted.

13. **Rental Fees**

Annual rental fees, which will be revised periodically are payable on issue of a Licensing Option and thereafter on the anniversary date of the issue of the authorisation. Fees for 2010 are calculated on the basis of €29 per sq km.

14. **Freedom of Information**

Applicants are advised that commercially sensitive information included with applications such as financial forecasts and proprietary data, will be dealt with by the Department in accordance with the Freedom of Information Acts 1997 – 2003.

Useful website addresses

Department of Communications, Energy and Natural Resources:

<http://www.dcenr.gov.ie>

Petroleum Affairs Division Homepage:

<http://www.pad.ie>

Online access to information relating to Petroleum Authorisations, Wells, Potential Field and Seismic Surveys:

<http://gis.dcenr.gov.ie/internetIPAS/servlet/internet/IPAS2IHome>

Licensing Terms for Offshore Oil and Gas Exploration, Development and Production 2007:

<http://www.dcenr.gov.ie/NR/rdonlyres/9DA12EC6-C3E5-4DC3-AA45-7CCB3620364A/0/LicensingTerms2007.pdf>

Attachment I:

Townland Listings for 2010 Onshore Petroleum Licensing

1. Northwest Carboniferous Basin (4,309 Townlands; area approx. 4,003 sq km)

COUNTY CAVAN TOWNLANDS

AGHABANE, AGHABOY (TULLYHAW BY), AGHAKINNIGH, AGHARASKILLY, AGHAVADRIN, AGHAVILLA, AGHAVOHER, AGHAWREENAGH, AGHNACALLY, AGHNACOLLIA, AGHNACREEVY, ALTACHULLION LOWER, ALTACHULLION UPPER, ALTATESKIN, ALTBREAN, ALT CROCK, ALTEEN, ALTINURE, ALTNADARRAGH, ALTNASHEEN, ALTSHALLAN, ANNAGH (TULLYHAW BY), ARDAN, ARDERRY, ARDLOUGHER (TULLYHAW BY), ARDLOUGHER (TULLYHUNCO BY), ARDMONEEN, ARDONAN, ARDOOHY, ARDUE, ARDVAGH, ARTIDOWNEY, ARTONAGH (LOWER LOUGHTEE BY), AUGHRIM, AUGHTREAGH, BALLINLOUGH, BALLYHUGH, BALLYMAGAURAN, BALLYMAGIRRIL, BALLYNAMADDOO, BALLYNAMANNAN, BARRAN, BAWN (TULLYHUNCO BY), BAWNBOY, BELLAHEADY OR ROSSBRESSAL, BELLALEENAN, BELLAVALLY LOWER, BELLAVALLY UPPER, BERRYMOUNT, BESSBROOK, BINKEERAGH, BOCADE GLEBE, BOFEALAN, BOLEY, BORIM, BRACKLEY, BRANKILL (LANESBOROUGH), BRANKILL (FLOOD), BREANDRUM (TULLYHUNCO BY), BULLIGS, BUN, BUNANUMERY, BURREN (E.D. TUAM), BURREN (ED LISSANOVER), BURSAN, CALDRAGH, CALLAGHS, CAMAGH, CAMALIER, CAPPAGH, CARN (TULLYHUNCO BY), CARNMACLEAN, CARRAMOREEN, CARRICK EAST, CARRICK WEST, CARRICKBRANNAN, CARRICKNAGROW, CARRIGAN (ED CARN), CARRIGAN (ED KILCONNY), CARROWFARNAGHAN, CARROWMORE, CARTRONNAGILTA, CASHEL (TULLYHAW BY), CASHEL BANE, CASTLESAUNDERSON DEMESNE, CAVANAGH, CAVANAQUILL, CLARAGH (TULLYHUNCO BY), CLARAGHPOTTLE GLEBE, CLARBALLY, CLIFTON, CLOGHOGE, CLONAMULLIG, CLONANDRA, CLONCOLLOW, CLONCOSE (ED KILLASHANDRA), CLONCURKNEY, CLONEARY, CLONKEEN, CLONOSEY, CLONTYCARNAGHAN, CLONTYCOO, CLONTYGRIGNY, CLOONEEN, CLOVERHILL DEMESNE, CLOWNEY, CLOWNINNY, COMMAS, COOLNALITTERAGH, COOLNASHINNY OR CROAGHAN, COOLOGE, COPPANAGHBANE, COPPANAGHMORE, COR, CORAGH (LOWER LOUGHTEE BY), CORAGH (TULLYHUNCO BY), CORAGH GLEBE, CORBOY GLEBE, CORCANADAS, CORCASHEL (TULLYHAW BY), CORDALEA, CORDRESSOGAGH, CORGLASS (LOWER LOUGHTEE BY), CORGREAGH (LOWER LOUGHTEE BY), CORLAGHALOO, CORLEA (TULLYHAW BY), CORLECKAGH LOWER, CORLECKAGH UPPER, CORLEGGY, CORLISBANNAN, CORLOUGH, CORMEEN (TULLYHUNCO BY), CORNACLEA OR TAWLAGH, CORNACLEIGH, CORNACRUM, CORNADARRAGH, CORNADARRAGH (PLEYDELL), CORNAGEE (TULLYHAW BY), CORNAGRAN (TULLYHAW BY), CORNAGROW (LOWER LOUGHTEE BY), CORNAGUNLEOG, CORNAHAIA, CORNAHAW, CORNALECK, CORNALON, CORNASKER, CORNEEN, CORNEENFLYNN, CORPORATION LANDS, CORRABACK, CORRACHOLIA BEG, CORRACHOLIA MORE, CORRACHOMERA, CORRACLASSY, CORRACLEIGH, CORRADEVERRID, CORRAHOASH, CORRAKEELDRUM, CORRALEE HANBEG, CORRAN (TULLYHAW BY), CORRANEARTY, CORRANIERNA (ED BALLYCONNELL), CORRANIERNA (ED PEDARA VOHERS), CORRAQUIGLEY, CORRAQUILL, CORRARD, CORRAROD, CORRASMONGAN, CORRATAWY, CORRATILLAN, CORRATIRIM, CORRATOBER LOWER, CORRATOBER UPPER, CORREVAN, CRANAGHAN, CREEA, CREENY (ED GRILLY), CREENY (ED MILLTOWN), CRONERY, CROSSMAKELAGHER, CUILLAGHAN, CULLIAGH, CULLION, CULLYLEENAN, CURRAGHABWEEHAN, CURRAGHGLASS, CURRAGHVAH, DERALK, DERAMFIELD, DERNAGLUSH, DERREARY, DERRESKIT, DERRINDREHID, DERRINLESTER, DERRINTINNY, DERRY (TULLYHUNCO BY), DERRY BEG, DERRY MORE, DERRYARMUSH, DERRYBRICK, DERRYCARK, DERRY CASSAN, DERRY CONNESSY, DERRYGEERAGHAN, DERRYGID (TULLYHUNCO BY), DERRYGINNY, DERRYHOO (LOWER LOUGHTEE BY), DERRYHOO (TULLYGARVEY BY), DERRYLAHAN (TULLYHAW BY), DERRYMONY, DERRYNACREEVE, DERRYNALISTER, DERRYNANANTA LOWER, DERRYNANANTA UPPER, DERRYNASEER, DERRYNASLIEVE, DERRYNATUAN, DERRYRAGH, DERRYREALT, DERRYVACKNY, DERRYVAHAN, DERRYVEHIL, DERRYVELLA, DERRYVONY, DISERT, DOOGARY, DOON (ED BALLYCONNELL), DOON (ED BENBRACK), DOWRA, DRING, DROGHILL, DRUMACON, DRUMALEE (LOWER LOUGHTEE BY), DRUMALEE (TULLYGARVEY BY), DRUMANE, DRUMASLADDY, DRUMAVADDY (LOWER LOUGHTEE BY), DRUMBAGH, DRUMBAR (TULLYHAW BY), DRUMBARLOM, DRUMBEAGH, DRUMBINNIS (TULLYHUNCO BY), DRUMBO (TULLYHUNCO BY), DRUMBOORY, DRUMBRUGHAS (LOWER LOUGHTEE BY), DRUMBRUGHAS (TULLYHAW BY), DRUMCANON (TULLYHAW BY), DRUMCANON (TULLYHUNCO BY), DRUMCAR, DRUMCARTAGH OR DIAMONDHILL, DRUMCASE, DRUMCASK, DRUMCOLE, DRUMCONRA OR LOWFORGE, DRUMCROW NORTH, DRUMCULLION (TULLYHAW BY), DRUMELLIS, DRUMERDANNAN, DRUMERSEE, DRUMGART, DRUMGESH, DRUMGOOHY, DRUMGORRY, DRUMHERRIFF, DRUMHURRIN, DRUMINISCLIN (TULLYGARVEY BY), DRUMINISKILL,

DRUMKEEN (LOWER LOUGHTEE BY), DRUMKERRIL, DRUMLANE (LOWER LOUGHTEE BY),
 DRUMLARAH, DRUMLAYDAN, DRUMLOUGH (LOWER LOUGHTEE BY), DRUMLOUGH (TULLYHAW BY), DRUMMANY (ED DIAMOND), DRUMMANY (ED SPRINGFIELD), DRUMMANY (PLAYDELL), DRUMMANY (TULLYGARVEY BY), DRUMMANY GLEBE, DRUMMANY MONTIAGHS, DRUMMINNION, DRUMMOY, DRUMMULLAGH, DRUMMULLY EAST, DRUMMULLY WEST, DRUMNOOSE, DRUMOD GLEBE, DRUMQUILL, DRUMRUSH, DUCKFIELD, DUNAWHEEL, DUNGLAVE, DUNMAKEEVER, EAGLEHILL, EDENMORE, EDENTERRIFF, EONISH, ERRARAN, ESHVEAGH, EVLAGH BEG, EVLAGH MORE, FAHARLAGH, FARTRIN, FEEDARRAGH, FEUGH (MAXWELL), FEUGH BISHOPS OR DRUMALLA, FINAGHOO, FOALIES, FURNACELAND, GARFINY, GARRYFLUIGH, GARTACARA, GARTAQUILL, GARTBRATTAN (LOWER LOUGHTEE BY), GARVAGH, GARVALT LOWER, GARVARY, GARVESK, GLASSTOWN OR PORT, GLEN, GORTACASHEL, GORTACLOGHER, GORTAQUILL, GORTAWEE OR SCOTCHTOWN, GORTEEN (ED BALLYMAGAUAN), GORTEEN (ED SWANLINBAR), GORTEEN OR GORTEENAGARRY, GORTEENNAGLOGH, GORTLAUNAGHT, GORTMORE, GORTNACARGY, GORTNACLEIGH, GORTNADERRYLEA, GORTNALECK, GORTNALEG (ED TIRCAHAN), GORTNALEG (ED TUAM), GORTNAVREEGHAN, GORTOORLAN, GORTULLAGHAN, GOWLUGH NORTH, GOWLUGH SOUTH, GOWLAN (ED BENBRACK), GOWLAN (ED TUAM), GOWLAT, GREAGH (TULLYHAW BY), GREAGHACHOLEA OR CORAGHMUCK, GREAGHNADOONY, GREAGHRAHAN, GREATHILL, GRILLY, GUB, GUB OR GARVALT UPPER, GUBAVEENY, GUBNAFARNA, GUBNAGREE, GUBRAWULLY, GUBRIMMADDERA, HAWKSWOOD, INISKMUCK, KEELAGH (TULLYHUNCO BY), KEENAGH (TULLYHAW BY), KEENAGHAN, KEILAGH, KILCONNY, KILCORBY, KILDALLAN, KILDOAGH, KILDUFF (LOWER LOUGHTEE BY), KILDUFF LOWER, KILDUFF MIDDLE, KILDUFF UPPER, KILLAGHADUFF, KILLARAH, KILLICAR, KILLYBANDRICK, KILLYCARNEY, KILLYCLUGGIN, KILLYCRIN, KILLYFANA, KILLYFERN, KILLYGORMAN, KILLYGOWAN (TULLYHUNCO BY), KILLYGREAGH, KILLYLEA, KILLYMORIARTY, KILLYNAFF, KILLYNAHER, KILLYNEARY, KILLYNURE (TULLYGARVEY BY), KILLYRAN, KILLYTAWNY, KILLYWAUM, KILLYWILLIN, KILLYWILLY, KILNACRANAGH, KILNACROSS (TULLYHUNCO BY), KILNAGLARE, KILNAVERT, KILLSALLAGH (TULLYHAW BY), KILSOB, KILTAGLASSAN, KILTOMULTY, KILTYNASKELLAN, KINAGHA BEG, KINAGHA MORE, KINNABO, KNOCKFIN, KNOCKGORM, KNOCKMORE, KNOCKRANNY, KNOCKROE (TULLYGARVEY BY), KNOCKROE (TULLYHAW BY), LAGAN, LAHEEN, LAKEFIELD, LANLISS, LANNANERRIAGH, LATTONE, LECHARROWNAHONE, LECK, LEGALOUGH, LEGATRAGHTA, LEGAVREAGRA, LEGEELAN, LEGGLASS, LEGGYKELLY, LEGNADERK, LEGNAGROW, LEITRA, LISNAMAIN OR SYCAMORE FIELDS, LISSANOVER, LISTIERNAN, LOUGHAN, LOUGHDOOLY, MACKAN, MACKNAN, MAKIEF, MANRAGH LOWER, MANRAGH UPPER, MEELTOGE, MEENASLIEVE, MILTOWN, MOHER (ED BALLYCONNELL), MOHER (ED BENBRACK), MOHER (LOWER LOUGHTEE BY), MOHERLOOB, MOHERREAGH, MONEEN, MONEENABRONE, MONEENSAURAN, MONEENTERRIFF, MONESK, MONEY, MONEYGASHEL, MONEYNURE, MONYDOO OR TONYCROM, MUCKLAGH, MUINAGHAN, MUINEAL, MULLAGHAHY, MULLAGHBOY (LOWER LOUGHTEE BY), MULLAGHBOY (TULLYHAW BY), MULLAGHDOO, MULLAGHDUFF, MULLAGHLEA, MULLAGHLEA GLEN, MULLAGHMEEN, MULLAGHMORE (TULLYHAW BY), MULLAGHMORE (TULLYHUNCO BY), MULLAGHMULLAN, MULLANACRE LOWER, MULLANACRE UPPER, MULLANAFFRIN, MULLANWARY, MULLY LOWER, MULLY UPPER, MULLYNAGOLMAN, MUNLOUGH NORTH, MUNLOUGH SOUTH, NAHEELIS, NED, NEWTOWN (ED BAWNBOY), NEWTOWN (ED TIRCAHAN), NOGHAN, OGGAL, OWENCAM, OWENGALLEES, PARISEE, PART OF GORTLAUNAGH, PORT (ED BAWNBOY), PORT (ED ESKY), PORTACLOGHAN, PORTALIFF GLEBE, PORTALIFF OR TOWNPARKS, PORTLAWNEY, PORTLONGFIELD, PORTRUAN, PORTURLAN, PROSPECT, PUTIAGHAN LOWER, PUTIAGHAN UPPER, QUIVVY (LOWER LOUGHTEE BY), RAFIAN, RAHAGHAN, RAHEELAN, RAKEELAN, RALEAGH, RAMULLIGAN, RAY, ROGARY, ROO, ROSEHILL (TULLYHAW BY), ROSSKEERAGH, SCRABBY, SHANCORN, SHANCORRY, SHANCROAGHAN, SKEAGH (TULLYHAW BY), SLIEVEBRICKAN, SNAKEEL, SNUGBOROUGH, SRALAHAN, SRALAHAN OR THE COMMON, SRUHAGH, SRUHANAGH, STRAHEGLIN, STRANADARRAGH, STRANAGAP, STRANAMART, TAWLAGHT (LOWER LOUGHTEE BY), TAWNAGH, TAWNYMAKELLY, TEEBANE, TEEBOY, TEEMORE (LOWER LOUGHTEE BY), TEEMORE (TULLYHAW BY), TENTS, TERMON (TULLYHAW BY), THORNHILL OR MULLANDREENAGH, TIRCAHAN, TIRGORMLY, TIRNAWANNAGH, TOBERLYAN, TOBERLYAN DUFFIN, TOMASSAN, TOMKINROAD, TONALLOY, TONANILT, TONLEEGEE, TONYARRAHER, TONYHALLAGH, TONYQUIN, TONYREVAN, TORREWA, TUAM, TULLAGHYRORY, TULLANDREEN, TULLANIERIN, TULLANTANTY, TULLANTEEN, TULLANTINTIN, TULLY (LOWER LOUGHTEE BY), TULLYANOG, TULLYBRACK, TULLYCRAFTON, TULLYDERMOT, TULLYLOUGHFIN, TULLYMINISTER, TULLYNABEHENY, TULLYNACLEIGH, TULLYNACONSPOD, TULLYNACROSS (TULLYHAW BY), TULLYNAFREAVE, TULLYNAMOLTRA, TULLYNAMOYLE, TULLYTIERNAN, TULLYTRASNA,

TULLYVEELA, TULLYWAUM, TUNKER, TURE (LOWER LOUGHTEE BY), TURE (TULLYHAW BY), UNSHINAGH (TULLYHAW BY), UNSHOGAGH, URAGH (LOWER LOUGHTEE BY), URAGH (TULLYHAW BY), URHANNAGH, YEWER GLEBE

COUNTY DONEGAL TOWNLANDS

ARDFARN, ARDLOUGHILL, BALLYHANNA, BALLYMUNTERHIGGIN, BALLYNACARRICK (ED CARRICKBOY), CAMLIN, CARRICKBOY, CAVAN (ED CARRICKBOY), CHERRYMOUNT, CLOGHORE, CLONTYSEER, CORLEA (ED CLIFF), DERRYKILLEW, DRUMACRIN, DRUMNAGROAGH, DUNMUCKRUM, EDENAGOR, FINNER, KILLEEN, KNOCKNASHANGAN, LEGALOSCRAN, LISSACHOLLY, MAGHERACAR, PORTNASON, RAHEEN, RATHGLASS, RATHMORE, ROWANTREEHILL, SMINVER, TEMPLENEW, TULLY (ED CARRICKBOY)

COUNTY LEITRIM TOWNLANDS

ACRES (CARRIGALLEN BY), ACRES (DRUMAHAIRE BY), ADEREEN, ADOON, AGHABONEILL, AGHACASHEL, AGHACASHLAUN, AGHADARK, AGHADERRARD EAST, AGHADERRARD WEST, AGHADRUMCARN, AGHADRUMDERG, AGHADRUMINSHIN, AGHADUNVANE, AGHAGINNY, AGHAGRANIA, AGHAKILBRACK, AGHAKILCONNELL, AGHAKILFAUGHNA, AGHAKILMORE, AGHALATEEVE, AGHALEAGUE (ED BALLINAMORE), AGHALEAGUE (ED NEWTOWN GORE), AGHALOUGH (ED AGHAVAS), AGHALOUGH (ED CORRALA), AGHAMEELTA, AGHAMEENY, AGHAMORE (DRUMAHAIRE BY), AGHAMORE (ED AGHANLISH), AGHAMORE (ED DRUMOD), AGHAMORE (ED GLENCAR), AGHAMORE (ED RINN), AGHANCARRA, AGHANLISH, AGHARANN, AGHAROOSKY, AGHARROO, AGHATAWNY LOWER, AGHATAWNY UPPER, AGHAVADDEN, AGHAVANNY, AGHAVAS, AGHAVILLA, AGHAVOGHIL, AGHAWILLIN (ED GARADICE), AGHINTASS, AGHINTOBER, AGHLACON, AGHLIN, AGHNAACROSS, AGHNAHAHA, AGHNAHOO (LEITRIM BY), AGHNAHOO (ROSCLOGHER BY), AGHOO, AGHOO EAST, AGHOO WEST, AGHYOWLA, ALTAKEERAN, ALTAVRA, ALTEEN, ALTEENACRES GLEBE, ALTIQUIN, ANNADUFF, ANNADUFF GLEBE, ANNAGH (CARRIGALLEN BY), ANNAGH (ED BELHAVAL), ANNAGH (ED CLOONCLARE), ANNAGH (LEITRIM BY), ANNAGH LOWER, ANNAGH UPPER, ANNAGHADERG, ANNAGHASNA, ANNAGHBOY, ANNAGHBRADICAN, ANNAGHDERG LOWER, ANNAGHDERG UPPER, ANNAGHEARLY, ANNAGHGERRY, ANNAGHKEENTY, ANNAGHMACONWAY, ANNAGHMACULLEN, ANNAGHNAMEADDOO, ANNAGHSELHERNY, ANTFIELD, ARDAGH, ARDAGH (GILBRIDE), ARDAGH (SHEERAN), ARDAKIP BEG, ARDAKIP MORE, ARDCOLUM, ARDERRY, ARDLOUGHER (DRUMAHAIRE BY), ARDLOUGHER (LEITRIM BY), ARDMEENAN, ARDMONEEN, ARDRUM, ARDUNSAGHAN, ARDVARNEY (ED CLOONCLARE), ARDVARNEY (ED DRUMAHAIRE), ARODDY, ARROO, ASKILL, ATTIFINLAY, ATTIMANUS, ATTIRORY, AUGHRIM (ED DRUMREILLY WEST), AUGHRIM (ED KILLARGA), AUGHRIM (LEITRIM BY), AUGHRIMAN SOUTH, BALLAGHNABEHY, BALLINWING, BALLYCALLEN, BALLYGLASS, BALLYMORE, BALLYNABOLL, BALLYNACLEIGH, BALLYNAMEELTOGE, BALLYNAMONY (CARRIGALLEN BY), BALLYNAMONY (LEITRIM BY), BANAGHER, BARGOWLA, BARLEAR, BARNAMEENAGH, BARNAMEENAGH WEST, BARR OF FARROW, BARRACASHLAUN, BARRACKPARK, BARRAGH BEG, BARRAGH MORE, BARRS EAST, BARRS WEST, BAWN, BEAGH, BELHAVAL, BELLAGART, BELLAKILTYFEA, BELLANABOY, BILBERRY ISLAND, BLACKGARDENS, BLACKMOUNTAIN, BLACKROCK, BOEESHIL (CARRIGALLEN BY), BOEESHIL (MOHILL BY), BOGGAUN (CARRIGALLEN BY), BOGGAUN (DRUMAHAIRE BY), BOIHY, BOLEYBAUN, BOLEYBOY, BOLEYBRACK, BOLEYMAGUIRE, BOLGANARD, BOMAHAS, BONEILL, BOYANNAGH, BRACKARY BEG, BRACKARY MORE, BRANRA, BRAUDPHARK, BREANDRUM (KING), BREANDRUM (PEYTON), BREANROSS, BREANROSS NORTH, BRISCLOONAGH, BROCKAGH, BROCKAGH LOWER, BROCKAGH UPPER, BRONAGH, BUCKHILL BARR, BUCKODE, BUNDIVEEN, BUNDUFF, BUNKILLEEN, BUNNY BEG, BUNNY MORE LOWER, BUNNY MORE UPPER, BUNREVAGH, CADDAGH GLEBE, CALDRAGH, CALLOUGHS, CALLOWHILL, CAMAGH, CAMALT, CAMDERRY, CANBEG, CANKEEL, CANNABOE, CAPPAGH, CARNTULLAGH, CARRAUN, CARRICK (ED ANNADUFF), CARRICK (ED GORTNAGULLION), CARRICK (MOHILL BY), CARRICKACROGHERY, CARRICKANURROO, CARRICKAPORT, CARRICKATEANE, CARRICKAVERIL, CARRICKAVOHER, CARRICKBAUN, CARRICKEENY, CARRICKEVY, CARRICKFAD, CARRICKGOOAN, CARRICKLEITRIM, CARRICKMAKEEGAN, CARRICKMURRAY, CARRICKNABRACK, CARRICKOGHIL, CARRICKREVAGH, CARRICKSLAVAN, CARRIGEEN (DRUMAHAIRE BY), CARRIGEEN (MOHILL BY), CARRIGEENCOR, CARRIGEENGEARE, CARROWBOY, CARROWCRIN, CARROWDUFF, CARROWKEEL, CARROWLAUR, CARROWNOONA, CARROWREVAGH, CARTOWN, CARTRON (DRUMAHAIRE BY), CARTRON (LEITRIM BY), CARTRONATEMPLE, CARTRONBEG, CARTRONGIBBAGH, CASHEL (DRUMAHAIRE BY), CASHELAVEELA, CASTLEROGY, CASTLETOWN, CAVAN (DRUMAHAIRE BY), CAVAN (MOHILL

BY), CHERRY ISLAND, CHERRYBROOK, CHURCH ISLAND, CHURCHFIELD, CLARASHINNAGH, CLEEN, CLEENAGHOO, CLEENDARGAN, CLEGGAN, CLEIGHRAGH, CLEIGHRAN, CLEIGHRAN BEG, CLEIGHRAN MORE, CLOGHAN, CLOGHER (CARRIGALLEN BY), CLOGHER (LEITRIM BY), CLOGHMEEN, CLOODREVAGH, CLOODRUMMAN BEG, CLOODRUMMAN MORE, CLOONAGH, CLOONAGHMORE, CLOONAMURGAL, CLOONAQUIN, CLOONAWILLIN, CLOONBANNIVE, CLOONBO, CLOONBONIAGH NORTH, CLOONBONIAGH SOUTH, CLOONBOYGHHER, CLOONCAHIR, CLOONCLARE, CLOONCLIVVY, CLOONCOE, CLOONCOSE (CARRIGALLEN BY), CLOONE (MOHILL BY), CLOONE (ROSCLOGHER BY), CLOONEEN (DRUMAHAIRE BY), CLOONEEN (ROSCLOGHER BY), CLOONEY, CLOONFEACLE, CLOONFINNAN, CLOONLAUGHIL (ED MOHILL), CLOONLOGHER, CLOONMEONE LOWER, CLOONMEONE UPPER, CLOONMULLIGAN, CLOONSHEEBANE, CLOONSHEEREVAGH, CLOONTURK, CLOONTY, CLOONTYPRUGHLISH, CLOVERHILL OR CORGLASS, COLDRUMMAN, COMMONS, CONAGHIL, CONRAY (DRUMAHAIRE BY), CONRAY (ROSCLOGHER BY), CONWAL NORTH, CONWAL SOUTH, COOLABAUN, COOLCREEVE, COOLLEGREANE, COOLODONNELL, CORAGH, CORAUGHRIM, CORBALLY, CORBEG, CORBOGHIL, CORCHUILL LOWER, CORCHUILL UPPER, CORCORMICK, CORCUSCONNY, CORDERRY (ED BELHAVEL), CORDERRY (ED MAHANAGH), CORDERRY (MORTON), CORDERRY (PEYTON), CORDIVER, CORDUFF (CARRIGALLEN BY), CORDUFF (DRUMAHAIRE BY), CORDUFF (ED BREANDRUM), CORDUFF (ED DRUMOD), CORDUFFHILL, CORGALLION, CORGAR (MOHILL BY), CORGAR(CARRIGALLEN BY), CORGLANCEY, CORGLASS (CARRIGALLEN BY), CORGLASS (ED ST PATRICK), CORGLASS (ED YUGAN), CORGLASS (LEITRIM BY), CORGLASS (ROSCLOGHER BY), CORGLOGHAN, CORHAWNAGH, CORLASKAGH, CORLEA (LEITRIM BY), CORLEA (ROSCLOGHER BY), CORLISHEEN, CORLONA, CORLOUGH (ED DRUMSHANBO), CORLOUGH (ED FENAGH), CORLOUGHCAHILL, CORLOUGHLIN, CORLOUGHTOMALTY, CORMONGAN, CORMORE, CORNABROHER, CORNABRONE, CORNACLOY (ED DRUMKEERAN), CORNACLOY (ED MUNAKILL), CORNACORROO, CORNACRANAGHY, CORNACREEGH, CORNACREEVE (ED CLOVER HILL), CORNACREEVE (ED OUGHTERAGH), CORNAFOSTRA, CORNAGAWNA, CORNAGEEHA (DRUMAHAIRE BY), CORNAGEEHA (LEITRIM BY), CORNAGEEHA (ROSCLOGHER BY), CORNAGEERAGH, CORNAGHER, CORNAGILLAGH (LEITRIM BY), CORNAGILLAGH (ROSCLOGHER BY), CORNAGLAH, CORNAGON, CORNAGRESHA NORTH, CORNAGRESHA SOUTH, CORNAGUILLAGH, CORNALAGHTA, CORNALECK, CORNAMAN, CORNAMARVE, CORNAMUCKLAGH (LEITRIM BY), CORNAMUCKLAGH NORTH, CORNAMUCKLAGH SOUTH, CORNAROY, CORNASHAMSOGHE, CORNASLIEVE, CORNASTAUK, CORNAVAD, CORNAVANNOGHE, CORNEE, CORNULLA, CORRABARRACK, CORRABEAGH (LEITRIM BY), CORRABEAGH (MOHILL BY), CORRABEEGHER, CORRACABOON, CORRACAR, CORRACHOLE, CORRACHOOSAUN, CORRACHUILL, CORRACLOONA, CORRACRAMPH NORTH, CORRAGOLY, CORRALA, CORRALAHAN, CORRALEECHAN, CORRALESKIN, CORRALUSTIA, CORRAMAHAN, CORRAMARTIN, CORRANEARY, CORRAPHORT, CORRASCOFFY, CORRASMAGHOOIL, CORRASRA, CORRATAWY, CORRATERRIFF NORTH, CORRATERRIFF SOUTH, CORRATIMORE GLEBE, CORRAWALEEN, CORRAWEEHIL GLEBE, CORREEN, CORREISH, CORRUDDA, CORRY, CORRY ISLAND, CORRYARD, CORRYCULLEN, CORRYOLUS, CORTOBER, COSTREA, CRANE ISLAND, GREENAGH (LEITRIM BY), GREENAGH (MOHILL BY), CREEVELEA (DRUMAHAIRE BY), CREEVELEA (ROSCLOGHER BY), CREEVY, CREY, CRICKEEN, CROCKAWADDY, CROCKEEN, CROMLIN, CROSSDRUMMAN, CRUMMY, CRUMPAUN, CUILLAGH, CUILMORE (CARRIGALLEN BY), CUILMORE (MOHILL BY), CUILTIA, CUILTIES, CULLEN AND BROWNHILL, CULLENTRAGH, CULLIONBOY, CULLY, CUNNION, CURRAGHA (LEITRIM BY), CURRAGHA (MOHILL BY), CURRAGHA SHILLAUN, CURRAGHABOY, CURRAGHAN, CURRAGHATAWY, CURRAGHFORE (DRUMAHAIRE BY), CURRAGHFORE (ROSCLOGHER BY), CURRAGHMARTIN, CURRAGHNABANIA, CURRAGHNAWALL, CURRAGHOAGHRY, CURRAGHS NORTH, CURRAGHS SOUTH, CURRAUN, CURRY, DARKVALLEY, DEERPARK, DEFFIER, DERGVONE, DERNAHELTY BEG, DERNAHELTY MORE, DERNASMALLAN, DERRADDA, DERREEN (ED ANNADUFF), DERREEN (ED CASTLEFORE), DERREEN (JOHNSTON), DERREEN (LLOYD), DERREEN (MOHILL BY), DERREENAGEER, DERREENS, DERRINAHER, DERRINDANGAN, DERRINDREHID, DERRINIVVER, DERRINKEHER (BRADY), DERRINKEHER (MCDONNELL), DERRINKEHER (RAYCROFT), DERRINKIP, DERRINLOUGHAN, DERRINTAWNY, DERRINTAWY GLEBE, DERRINTOBER, DERRINTONNY, DERRINTONNY (PART OF), DERRINURN, DERRINVOHER, DERRINVONEY LOWER, DERRINVONEY UPPER, DERRINWEER, DERRINWILLIN, DERRINWILLIN GLEBE, DERRYBOFIN, DERRYBRACK, DERRYBRISK, DERRYCULLINAN, DERRYCULLINAN BEG, DERRYDUFF, DERRYGOAN, DERRYHALLAGH, DERRYHERK, DERRYLAHAN, DERRYLAUR, DERRYLUSTIA, DERRYMACOFFIN, DERRYNAHIMMIRK, DERRYNAHINCH, DERRYNAHONA, DERRYNALURGAN, DERRYNASEER (ROSCLOGHER BY), DERRYNAWANA, DERRYNIGGIN, DERRYOUGHTER,

DERRYTEIGEROE, DERRYVALANNAGHER GLEBE, DIFFIN, DIFFREEN, DONAGH BEG, DONAGH MORE, DOOARD, DOOBALLY, DOOCHORRAN, DOOLARGY GLEBE, DOONARAH, DOONKELLY, DOONMORGAN, DOOSTROKE, DORRUSAWILLIN, DRIMNA, DRINY, DRISHOGE, DRISTERAN, DRISTERNAUN, DROMORE (DRUMAHAIRE BY), DROMORE (ED GARADICE), DROMORE (ED LISGILLOCK), DROMORE (LEITRIM BY), DROMORE (ROSCLOGHER BY), DRUMACOLLA, DRUMAD (BEIRNE), DRUMAD (MORAN), DRUMADYKEY, DRUMAHAIRE, DRUMAHIRA, DRUMALEAGUE, DRUMANURE (CARRIGALLEN BY), DRUMANURE (ROSCLOGHER BY), DRUMANY (BEIRNE), DRUMANY (CARRIGALLEN BY), DRUMANY (DRUMAHAIRE BY), DRUMANY (LEITRIM BY), DRUMANY (O), DRUMANY (TENANTS), DRUMANY GLEBE, DRUMARAGH, DRUMARD (JONES), DRUMARIGNA, DRUMAWHEEL GLEBE, DRUMBAD (CARRIGALLEN BY), DRUMBEIGHRA, DRUMBIBE, DRUMBOHER, DRUMBOY, DRUMBRAHADE, DRUMBRANNED, DRUMBRICK (ED CLOVER HILL), DRUMBRICK (ED CORRALA), DRUMBULLOG, DRUMCANON, DRUMCARRA, DRUMCASHEL, DRUMCASHLAGH, DRUMCATTAN, DRUMCOLLAGAN, DRUMCOLLOP, DRUMCONG, DRUMCONLEVAN, DRUMCONOR, DRUMCOORA (MOHILL BY), DRUMCOURA, DRUMCREE, DRUMCROMAN (CARRIGALLEN BY), DRUMCROMAN (LEITRIM BY), DRUMCROMAUN, DRUMCROY, DRUMCULLION, DRUMDARKAN, DRUMDART, DRUMDARTAN GLEBE, DRUMDERG (CARRIGALLEN BY), DRUMDERG (DRUMAHAIRE BY), DRUMDERG (LEITRIM BY), DRUMDIFFER, DRUMDILLURE, DRUMDOO, DRUMDUFF, DRUMDUFF SOUTH, DRUMDUFFY, DRUMEANAN BEG, DRUMEANAN MORE, DRUMEELA, DRUMERCROSS, DRUMERGOOLE, DRUMERKEANE, DRUMGANE, DRUMGARN, DRUMGEAGLOM, DRUMGILRA (LEITRIM BY), DRUMGORMAN, DRUMGOWLA (LEITRIM BY), DRUMGOWLA (MOHILL BY), DRUMGOWNAGH (CARRIGALLEN BY), DRUMGOWNAGH (ED BREANDRUM), DRUMGOWNAGH (ED GOWEL), DRUMGUD, DRUMGUNNY, DRUMHALLAGH, DRUMHALRY, DRUMHALWY, DRUMHANY, DRUMHANY NORTH, DRUMHANY SOUTH, DRUMHARKAN, DRUMHARKAN GLEBE, DRUMHECKIL, DRUMHERRIFF, DRUMHIERNY, DRUMHIRK (ED ROWAN), DRUMHUBBRID, DRUMMILLION, DRUMINALASS, DRUMINARGID, DRUMINEIGH GLEBE, DRUMINGNA, DRUMINSHIN, DRUMINSHIN GLEBE, DRUMINSHINGORE, DRUMKEEL, DRUMKEELAN, DRUMKEELAN BEG, DRUMKEELAN MORE, DRUMKEEN, DRUMKEERAN (DRUMAHAIRE BY), DRUMKEERAN (ED BUNNYBEG), DRUMKEERAN (ED CARRICK-ON-SHANNON), DRUMKEILVY, DRUMKILLA, DRUMKILLEEN, DRUMKIRWAN, DRUMLAHEEN, DRUMLARA, DRUMLEA, DRUMLEAGUE, DRUMLEASE, DRUMLEEVAN, DRUMLIFFIN GLEBE, DRUMLITTEN (BESBOROUGH), DRUMLITTEN (KING), DRUMLOM, DRUMLONAN, DRUMLOONA, DRUMLOWAN, DRUMLUMMAN, DRUMLUMMAN GLEBE, DRUMMAGH, DRUMMAHAN, DRUMMANACAPPUL, DRUMMANASOOAN, DRUMMANFAUGHNAN, DRUMMANGARVAGH, DRUMMANS (ED AGHANLISH), DRUMMANS (ED GLENADE), DRUMMANS ISLAND, DRUMMANS LOWER, DRUMMANS UPPER, DRUMMAUNROE, DRUMMEEN, DRUMMUCKER, DRUMMURY, DRUMNA, DRUMNACOT, DRUMNACROSS, DRUMNADOBER, DRUMNAFINNILA, DRUMNAFINNILA BARR, DRUMNID, DRUMOGHTY BEG, DRUMOGHTY MORE, DRUMOULA, DRUMPARSONS, DRUMRACKAN, DRUMRAGHOOL NORTH, DRUMRAGHOOL SOUTH, DRUMRAHAN, DRUMRAINE GLEBE, DRUMRANE, DRUMREASK, DRUMREGAN, DRUMREILLY, DRUMREWHY, DRUMRISTIN, DRUMROOSK NORTH, DRUMROOSK SOUTH, DRUMRUEKILL, DRUMSHANBO, DRUMSHANBO NORTH, DRUMSHANGORE, DRUMSNA, DRUNGAN, DUNAVINALLY, DUNCARBRY, EDEN (DRUMAHAIRE BY), EDEN (ROSCLOGHER BY), EDENAVOW, EDENMORE, EDENVELLA, EDERGOLE (DRUMAHAIRE BY), EDERGOLE (MOHILL BY), EFFRINAGH, ERREW (MOHILL BY), ERRIFF, ESKER, ESKER NORTH, ESKER SOUTH, FAHY, FAHYMORE, FALLACARRA, FALTY, FARGRIM, FARNAGH, FASLOWART, FAUGHARY, FAWN (DRUMAHAIRE BY), FAWN (LEITRIM BY), FAWNARRY, FAWNLIION, FEARNAGHT, FEDARO, FENAGH (DRUMAHAIRE BY), FENAGH (ROSCLOGHER BY), FENAGH BEG, FERTAGH, FINGREAGH LOWER, FINGREAGH UPPER, FINISKIL, FINISKLIN, FINNALAGHTA, FIVEPOUNDLAND, FLUGHANAGH, FOHERA, FORMOYLE, FOXBOROUGH, FRIARSTOWN, FUNSHINAGH, GANNAVAGH, GARADICE (CARRIGALLEN BY), GARADICE (MOHILL BY), GARGRIM, GARVAGH (DRUMAHAIRE BY), GARVAGH (LEITRIM BY), GARVAGH (MOHILL BY), GARVAGH GLEBE, GARVLOUGH, GEAGLOM, GESKANAGH GLEBE, GLACK, GLACKAUNADARRAGH, GLASDRUMMAN (LEITRIM BY), GLASDRUMMAN (MOHILL BY), GLASDRUMMAN (ROSCLOGHER BY), GLASDRUMMAN BEG, GLASDRUMMAN MORE, GLASSALT, GLEBE (CARRIGALLEN BY), GLEBE (LEITRIM BY), GLEBE (ROSCLOGHER BY), GLENBOY, GLENEIGE, GLENKEEL, GLENNAN BEG, GLENNAN MORE, GORT, GORTACHOOSH, GORTACORKA, GORTAGGLE, GORTAHORK, GORTANURE NORTH, GORTANURE SOUTH, GORTATRESK, GORTAVACAN, GORTCONNELLAN, GORTEEN (DRUMAHAIRE BY), GORTEENACHURRY, GORTEENAGUINNELL, GORTEENDARRAGH, GORTEENORAN, GORTERMONE (DRUMAHAIRE BY), GORTFADDA, GORTGARRIGAN, GORTINAR, GORTINEE,

GORTINTY, GORTNACORKOGE, GORTNACRIEVE, GORTNADERRARY, GORTNAGARN, GORTNAGROGERNY, GORTNAGULLION, GORTNALAMPH, GORTNALIBBERT, GORTNALOUGH, GORTNALUG, GORTNARAH, GORTNASILLAGH, GORTNASILLAGH EAST, GORTNASILLAGH WEST, GORTNASKEAGH, GORTNAWAUN, GORTYCLERY, GOWEL, GOWLAUN, GOWLAUNREVAGH, GOWLY, GRANGE, GREAGH (DRUMAHAIRE BY), GREAGH (ED CARRICK-ON-SHANNON), GREAGH (ED FENAGH), GREAGHFARNAGH, GREAGHGLASS, GREAGHNADARRAGH, GREAGHNAFARNA (ED KILLANUMMERY), GREAGHNAFARNA (ED YUGAN), GREAGHNAGLOGH, GREAGHNAGON, GREAGHNAGUILLAUN, GREAGHNALOUGHRY, GREAGHNASLIEVE, GREAGHREVAGH BEG, GREAGHREVAGH MORE GLEBE, GREENAUN, GREENAUN NORTH, GREENAUN SOUTH, GREYFIELD, GROVE, GUBACREENY, GUBADERRY, GUBADRUISH, GUBALAUN, GUBANUMMERA, GUBB, GUBINEA, GUBMANUS, GUBNACURRAFORE, GUBNAGEER, GUBNAVEAGH, GUBROE, GUBS, HALLS, HARTLEY, HEADFORD, INISHEHER, INISHKEEN, INISHMAGRATH ISLAND, INISHMEAN, INISHMUCKER, INISHTEMPLE, JAMESTOWN, KEELAGH, KEELOGE, KEEOGES, KEELRIN, KEENAGHAN, KEENHEEN, KEONBROOK, KESHARRIGAN, KILBODERRY, KILBRACKAN, KILCLAREBEG, KILCLAREMORE, KILCOON, KILCOOSY, KILDOO, KILDORRAGH (CARRIGALLEN BY), KILDORRAGH (LEITRIM BY), KILGARRIFF, KILLADISKERT, KILLADOUGH, KILLAGLASHEEN, KILLAHURK, KILLALEEN, KILLAMAUN, KILLAMEEN, KILLANANIMA, KILLANEEN, KILLANUMMERY, KILLAPHORT, KILLARCAN, KILLARGA, KILLASANOWL, KILLAVOGGY, KILLEA, KILLEEN, KILLEENNA GLEBE, KILLERRIN, KILLOOMAN, KILLYCLOGHAN, KILLYDRUM, KILLYFEA, KILLYGAR, KILLYMEEHIN, KILMACSHERWELL, KILMADDAROE, KILMAGHERA, KILMAKERRILL, KILMORE (ED DRUMKEERAN), KILMORE (ED SRAMORE), KILMORE (ED YUGHAN), KILNACREEVY, KILNAGARNS LOWER, KILNAGARNS UPPER, KILNAGROSS, KILNAMADDYROE, KILNAMARVE, KILROOSK, KILRUSH, KILTOGHERT, KILTUBBRID, KILTYBARDAN, KILTYCARNEY, KILTYCLOGHER, KILTYCREEVAGH, KILTYFEENAGHTY GLEBE, KILTYFINNAN, KILTYGERRY, KILTYHUGH, KILTYMOODAN, KILTYNASHINNAGH (CARRIGALLEN BY), KILTYNASHINNAGH (LEITRIM BY), KINKILLEW, KINLOUGH, KINNARA GLEBE, KNOCKACOSAN, KNOCKACULLION (CARRIGALLEN BY), KNOCKACULLION (DRUMAHAIRE BY), KNOCKALONGFORD, KNOCKANROE (CARRIGALLEN BY), KNOCKANROE (ROSCLOGHER BY), KNOCKATEEAN, KNOCKBRACK, KNOCKMULLIN, KNOCKNACLASSAGH, KNOCKNACOSKA, KNOCKNASAWNA, KNOCKROOSK, KNOCKS, LABBYESLIN, LACKAGH, LACON, LAGHTA, LAGHTY, LAGHTY BARR, LAHARD, LAHEEN (CARRIGALLEN BY), LAHEEN (LEITRIM BY), LAHEEN (PEYTON), LAHEEN NORTH, LAHEEN SOUTH, LAHEENNAMONA, LARAGH, LAREEN, LARGA, LARGAN, LARGAN MOUNTAIN, LARGANAVADDOGE, LARGANDILL, LARGANDOON, LARGANHUGH, LARGANTEMPLE, LARGY, LARGYDONNELL, LARKFIELD, LATTONE, LAUNTAGGART, LAVAGH (DRUMAHAIRE BY), LAVAGH (LEITRIM BY), LAVAREEN, LAVAU, LEAMANISH, LEAMASKALLY, LECARROW OR STRANDHILL, LECKAN, LECKANARAINY, LECKAUN (ED DRUMKEERAN), LECKAUN (ED SRAMORE), LEEAN, LEGANAMER, LEITRA, LEITRIM (ED KILTUBBRID), LEITRIM (ED LEITRIM), LEITRIM LOWER, LEITRIM UPPER, LEONAGH, LETTER, LETTERFINE, LISACOGHIL, LISADLOOEY, LISBROCKAN, LISCALLYROAN, LISCARBAN, LISCLOONADEA, LISCONOR, LISCUILFEA, LISCUILLEW LOWER, LISCUILLEW UPPER, LISDADANAN, LISDARUSH, LISDAUKY, LISDROMACRONE, LISDROMAFARNA, LISDROMAREA NORTH, LISDROMAREA SOUTH, LISDRUMGIVEL LOWER, LISDRUMGIVEL UPPER, LISDRUMGRAN, LISDUFF (ED CARRICK-ON-SHANNON), LISDUFF (ED DRUMSNA), LISFULTAGHAN, LISGARNEY, LISGAVNEEN, LISGILLOCK GLEBE, LISGOOL, LISGORMAN, LISGRUDDY, LISLAHY, LISLEA, LISMAKEEGAN, LISMANNAGH, LISMOYLE, LISNABRACK (LEITRIM BY), LISNABRACK (ROSCLOGHER BY), LISNAGAT, LISNAGEA, LISNAGOWAN, LISNANAW, LISNANORRUS, LISNATULLAGH, LISOMADAUN, LISROUGHTY, LISSACARN, LISSAGARVAN, LISSEEGHAN, LISSINAGROAGH, LISSINISKA, LONGFIELD, LONGSTONES, LOUGHAPHONTA, LOUGHAPHONTA BARR, LOUGHCONWAY, LOUGHMUIRRAN, LOUGHROS, LOUGHSCUR, LUGALUSTRAN, LUGASNAGHTA, LUGHAWNAGH, LUGMEELTAN, LUGMEEN, LUGMORE, LUGNAFAUGHERY, LUGNAGON, LUGNASKEEHAN, LURGA, LURGAN, MACKAN, MAGHERAMORE, MAGURK, MAHANAGH (DRUMAHAIRE BY), MAHANAGH (LEITRIM BY), MAHANAGH (PART OF), MANORHAMILTON, MAUTIAGH, MAYO, MEELICK, MEENAGH, MEENAGRAUN, MEENAPHUILL, MEENKEERAGH, MEENYMORE, MILLPARK, MILTRON GLEBE, MINKILL, MISKAUN GLEBE, MODORRAGH, MOHER (CARRIGALLEN BY), MOHER (ED DRUMOD), MOHER (GREGG), MOHER (ROSCLOGHER BY), MOHERACREEVY GLEBE, MOHERNAMEELA, MOHERREVAN, MOHERREVOGAGH, MOHILL, MOLLYNADINTA, MONEEN, MONEENAGEER, MONEENATIEVE, MONEENGAUGAGH, MONEENLOM, MONEENREAVE, MONEENSHINNAGH, MONEYDUFF (ED GLENFARN), MONEYDUFF (ED SRAMORE), MONEYNURE, MONEYROE, MONG, MORERAH, MOUGH, MOUNTAINTHIRD, MOUNTCAMPBELL, MUCKLAGHAN GLEBE, MUCKLOUGH, MUCKROS, MUCKRUM,

MULKAUN, MULLAGH (DRUMAHAIRE BY), MULLAGH (MOHILL BY), MULLAGHANEIGH, MULLAGHBAUN, MULLAGHBOY (CARRIGALLEN BY), MULLAGHBOY (LEITRIM BY), MULLAGHBRACK, MULLAGHCASHEL, MULLAGHDOO, MULLAGHFADDA, MULLAGHGARVE, MULLAGHMORE (CARRIGALLEN BY), MULLAGHMORE (DRUMAHAIRE BY), MULLAGHNAMEELY, MULLAGHRIGNY, MULLAGHSALLAGH, MULLAGHYCULLEN, MULLANADARRAGH, MULLANALECK, MULLANASKEAGH, MULLANAVOCKAUN, MULLANYDUFF, MULLAUN (DRUMAHAIRE BY), MULLAUN (LEITRIM BY), MULLAUN (MOHILL BY), MULLAUN GLEBE, MULLIES, MULLYASTER, MULNASILLAGH, MULNAVANNOGE, MUNAKILL, MUNNAGASHEL, MURHAUN, NEWBROOK, NEWTOWNGORE, NURE, OGHILL, OUGHTERAGH, PARK, POLLBOY, POLLNAGAPPUL, PORT, PORTANEOGHT, POTTORE, PRABAGH, PRUGHLISH, RACULLEN, RAHEELIN, RAHEENDUFF, RAMOONEY, RANTOGE GLEBE, RASSAUN EAST, RASSAUN WEST, RATHBAUN, REDBRAE, RINN, RINNACURREEN, ROOSKY (MOHILL BY), ROOSKY (ROSCLOGHER BY), ROOSKYNAMONA, ROSCARBAN, ROSCLOGHER, ROSCUNNISH, ROSCUNNISH (PART OF), ROSDOOWAUN, ROSFRIAR, ROSHARRY, ROSS (ED MAHANAGH), ROSS (ED MANORHAMILTON), ROSS BEG GLEBE, ROSS MORE (DRUMAHAIRE BY), ROSSY, RUBBAL, RUE, SALLAGHAN, SCARDAUN, SCRABBAGH, SELTAN (DRUMAHAIRE BY), SELTAN (MCDONALD), SELTAN (MOHILL BY), SELTAN (MORAN), SELTANAHUNSHIN, SELTANNASAGGART OR CORRY MOUNTAIN, SELTANNASKEAGH, SHANCARRICK, SHANCURRAGH, SHANCURRAGH BARR OF, SHANCURRY, SHANNAGH, SHANRAW, SHANVAUS, SHASGAR, SHASMORE, SHASS, SHEEAN, SHEEBEG, SHEEMORE, SHEENA, SHEFFIELD, SHESKIN, SHESKINACURRY, SHESKNAN, SHIVDELAGH, SHIVDILLA, SHOALMORE, SKEAMARTIN, SKREENY (DRUMAHAIRE BY), SKREENY (ROSCLOGHER BY), SKREENY LITTLE, SLEVEEN, SLIEVENAKILLA, SLIGANAGH, SOCKNALOUGH, SOCKS, SPRINGFIELD, SRACLEIGHREEN, SRACREEGHAN, SRACUMMER (DRUMAHAIRE BY), SRACUMMER (ROSCLOGHER BY), SRADOON, SRADRINAGH, SRADRINAN, SRADRINE, SRADUFFY, SRAGARN, SRAGARVE, SRALOAGHAN, SRAMORE, SRANACRANNAGHY, SRANADARRAGH, SRANAGARVANAGH, SRANAGROSS, SRANEA, SRATRISSAUN NORTH, SRATRISSAUN SOUTH, SRAUD (CONOLLY), SRAUD (FERGUSON), SRAVRANNIES, SRIFF, SRUHAUN, STANGAUN, STRADERMOT, STRALONGFORD, STROKE, STUCK, SUNNAGH BEG, SUNNAGH MORE, SUNNAGHCONNER, SWEETWOOD LITTLE, SWEETWOOD LOWER, SWEETWOOD UPPER, TAASH, TAMLAGHT BEG, TAMLAGHT MORE, TAMLAGHTAVALLY, TAWLY, TAWNAGH MORE, TAWNAHONEY, TAWNALECK, TAWNAMACHUGH, TAWNYCORRAGH, TAWNYCURRY, TAWNYEELY, TAWNYFEACLE, TAWNYHOOSY, TAWNYLEA, TAWNYLUST, TAWNYLUST BARR, TAWNYLUST BARR UPPER, TAWNYMANUS, TAWNYMOYLE, TAWNYTALLAN, TAWNYUNSHINAGH, TENTS, TINNYBEG, TIRMACTIERNAN, TOMLOSKAN, TOMRUD, TONLEEGEE, TONNAGH, TOOMA, TOOMANS, TOOME, TOWNPARKS, TRAWNISH ISLAND, TREAN, TREANAKILLEW, TREANMORE, TREANNADULLAGH, TUCKMILLPARK, TULCON (LEITRIM BY), TULCON (MOHILL BY), TULLAGHAN, TULLAGHANS, TULLINLOUGHAN, TULLINTAGGART, TULLINTLOY, TULLINTOWELL, TULLINWANNIA, TULLINWILLIN, TULLY (CARRIGALLEN BY), TULLY (DRUMAHAIRE BY), TULLY (ED CARRICK-ON-SHANNON), TULLY (ED FENAGH), TULLY (ROSCLOGHER BY), TULLY NORTH, TULLYBRADAN, TULLYCLEVAUN, TULLYCOLY, TULLYCORKA, TULLYCREEVY, TULLYDERRIN, TULLYLACKAN BEG, TULLYLACKAN MORE, TULLYLANNAN, TULLYMURRAY, TULLYNACROSS, TULLYNAHAIA, TULLYNAMOYLE, TULLYNAMUCKDUFF, TULLYNAPURTLIN, TULLYNAROOG, TULLYNASCREEN, TULLYNASHARRAGH (DRUMAHAIRE BY), TULLYNASHARRAGH (ROSCLOGHER BY), TULLYORAN, TULLYOSCAR, TULLYSKEHERNY (DRUMAHAIRE BY), TULLYSKEHERNY (ROSCLOGHER BY), TULLYVEACAN, TULLYVEAME, TULLYWANA, TULRUSK, TURPAUN, TWIGSPARK, UMMERA (DRUMAHAIRE BY), UMMERA (MOHILL BY), UNSHINAGH (DRUMAHAIRE BY), UNSHINAGH (ED KILLYGAR), UNSHINAGH (ED OUGHTERAGH), UNSHINAGH (ROSCLOGHER BY), URAGH, URBAL, URBAL BARR, USSAUN, WARDHOUSE, WHITEROCK, WOODFORD DEMESNE

COUNTY MAYO TOWNLANDS

ATTINASKOLLIA, BALLINDOO OR DOOCastle, BALLINTADDER, BALLYDRUM, BALLYGLASS EAST, BALLYGLASS WEST, BARROE, BELLANACURRA, BLACKPATCH, BOLEYBOY, BOTINNY, BRACKLAGH (ED KILBEAGH), BRACKLOONAGH NORTH, BRACKLOONAGH SOUTH, BULCAUN, CAPPULCORRAGH, CARROWBEG (ED CUILDoo), CARROWEENY, CARROWLIAM BEG, CARROWLIAM MORE, CARROWMORE (ED CALLow), CARROWMOREMOY, CARROWNAGEERAGH (ED CALLow), CARROWNEDEN, CARROWNTOBER, CARTRON (ED SONNAGH), CARTRON (ED TUMGESH), CLOONACANNANA, CLOONAGHBOY, CLOONAINRA, CLOONAKILLINA, CLOONAWEEEMA, CLOONCLEEVRAH, CLOONCOUS, CLOONFANE, CLOONFEIGHTRIN, CLOONFINISH, CLOONLARA, CLOONLARHAN, CLOONLUMNEY,

CLOONMEEN EAST, CLOONMEEN WEST, CLOONMORE, CLOONTUBBRID, CORNAGEEHA, CREGGAUN, CUILMORE, DARHANAGH, DERRYDORNEEN, DERRYKINLOUGH, DERRYNABROCK, DOONMAYNOR, DROMADA (DUKE), DROMADA (GORE), DROMADA (JOYCE), DRUMAGH, DRUMALOOAUN, DRUMSHINNAGH, FLUGHANY, GOWEL, GOWLAUN (ED DOOCastle), GRAFFY (ED CUILDOO), KILGARRIFF (ED DOOCastle), KILLEEN (ED CUILDOO), KNOCKMANAGH, KNOCKMULLIN, KNOCKNASKEAGH (ED TUMGESH), KNOCKS, LAVY BEG, LAVY MORE, LISLAUGHNA, LISTERNAN, LOOBNAMUCK, LOWPARK, MAGHERABOY, MULLENMADOGHE, PUNTABEG, ROOSKY (ED CLOONMORE), RUBBLE, SONNAGH, SPECK, SRAH LOWER, SRAH UPPER, TAWNAGHBEG, TEMPLE, TIRANINNY, TOMBOHOLLA, TONNAGH, TONROE, TREANACALLY OR HAGFIELD, TROUTHILL OR KNOCKBRACK, TULLEAGUE, TUMGESH

COUNTY MONAGHAN TOWNLANDS

ACRES (MONAGHAN BY), AGHABOY, AGHABOY, AGHABOY NORTH, AGHABOY SOUTH, AGHACLOGHA, AGHADERRY, AGHADRUMCRU, AGHADRUMDONEY, AGHAFIN, AGHAGALLY, AGHAGAW (DARTREE BY), AGHAGAW (MONAGHAN BY), AGHALAVERY, AGHALISK, AGHALISKEEVAN, AGHALISSABEAGH, AGHALOUGHAN, AGHAMACKALINN, AGHANAMEENA, AGHANANIMY, AGHERACALKILL, AGHERAKELTAN, AGHNAGAP (TROUGH BY), AGHNAHA, AGHNAHOLA, AGHNAHUNSHIN, AGHNAMALLAGH, AGHNASADAGH, AGHNASHALVY, AGHNAVAR, ALLAGESH, ALTARTATE GLEBE, ANNACATTY, ANNACRAMPH, ANNAGALLY, ANNAGH (MONAGHAN BY), ANNAGH (TROUGH BY), ANNAGHBEG, ANNAGHEANE, ANNAGHERVY, ANNAGHKILLY, ANNAGHMARTIN, ANNAGHRAW, ANNAGOLA (MONAGHAN BY), ANNAGOLA (TROUGH BY), ANNAHAGH (ED MONAGHAN), ANNAHAGH (ED SCOTSTOWN), ANNAHAGH NORTH, ANNAHAGH SOUTH, ANNAREAGH NORTH, ANNAREAGH SOUTH, ANNAVEAGH, ANNIES, ANNYALTY, ANNYEEB, ANNYERK, ARDGINNY, ARDKIRK (TROUGH BY), ARDNASALLEM, ASTRISH BEG, ASTRISH MORE, ATTIDUFF (TROUGH BY), AUGHNACLOY, BALLINTOPPAN, BALLYLECK, BALLYNAHONE, BARRATITOPPY LOWER, BARRATITOPPY UPPER, BELDERG, BELLANAMAN, BILLARY, BILLIS, BILLISES, BOUGH, BOUGHILL, BOUGHKEEL, BRACKAGH (TROUGH BY), BRAGAN, BRANDRUM, BROOKVALE, BULLOGBREAN, BURDAUTIEN, CALDAVNET, CAMLA, CAPPAGH, CAPPAGH (KILGORMLY), CAPPOG (MONAGHAN BY), CARN (ED CLONES), CARN (MONAGHAN BY), CARNEY ISLAND, CARNOWEN, CARNQUILL, CARRACHOR, CARRICKMORE, CARRIGANS, CARRIVETRAGH, CARROWBARRA, CARROWBARRA ISLAND, CARROWHATTA, CARROWKEEL, CAVAN, CAVAN (COPE), CAVAN (MOUTRAY), CAVANACROSS, CAVANLECKAGH, CAVANMORE, CAVANREAGH (DARTREE BY), CAVANREAGH (MONAGHAN BY), CLADOWEN, CLANICKNY, CLENLOUGH, CLERY, CLOGHERNAGH (DARTREE BY), CLOGHERNAGH (TROUGH BY), CLOGHFIN, CLOGHNART, CLONACULLAN, CLONAMULLY, CLONAMUNSHA, CLONAVILLA, CLONBOY, CLONCALLICK, CLONCAW, CLONCUMBER, CLONCURRIN, CLONEDERGOLE, CLONFAD (ED CURRIN), CLONFAD (ED DRUMMULLY), CLONISBOYLE, CLONKEADY, CLONKEELAN, CLONKEEN, CLONKEEN (COLE), CLONKEEN (LUCAS), CLONKIRK, CLONLEEK, CLONLONAN, CLONLURA, CLONMORE, CLONNAGORE, CLONNESTIN, CLONOONY, CLONOLA, CLONRYE, CLONSHANVO, CLONTASK, CLONTIBRET, CLONTOE, CLONTREAT, CLONTYBUNNIA, CLONTYCASTA, COLEMAN, CONAGHY, COOLATTY, COOLBERRIN, COOLCOLLID, COOLDARRAGH, COOLKILL EAST (MONAGHAN BY), COOLKILL WEST (MONAGHAN BY), COOLMAIN, COOLMUCKBANE, COOLNACARTE, COOLNALONG, COOLSHANNAGH, CORAGHBRACK, CORAGHY (DARTREE BY), CORBEG, CORBLONOG, CORCLARE, CORCREEGHY, CORCUMMINS, CORGREENAN, CORHOLLAN, CORKNOCK, CORLAT (ED SHESKIN), CORLATTALLAN, CORNACREEVE (ED SHESKIN), CORNACREEVE (TROUGH BY), CORNAFAGHY, CORNAGILTY, CORNAGUILLAGH, CORNAHEIVE, CORNAHOE (ED TEHALLAN), CORNANURE (TROUGH BY), CORNAPASTE, CORNECASSA DEMESNE, CORRACRIN, CORRAGH (MAXWELL), CORRAGHBRACK, CORRAGHDOWN, CORRAGHDUFF, CORRASKEA (DARTREE BY), CORRATRASNA, CORRINSHIGO (ED CLONES), CORRINSHIGO (ED SCOTSTOWN), CORRY, CORRYARBEG, CORVAGHAN, CORVALLY (ED TEHALLAN), CREAGHAN, CREESIL, CREEVAGHY, CREEVELEA (DARTREE BY), CREEVELEA (TROUGH BY), CREIGHANS, CROCKCUMBERLAND, CROSSES (ED BELLANODE), CROSSMOYLE, CROSSNACALDOO, CROVER (MONAGHAN BY), CROWEY, CRUMLIN (ED TEHALLAN), CULDALOO, CURKIN, CUSSEE, DAVAGH ETRA, DAVAGH OTRA, DERNACOO, DERNADARRIFF, DERNAGOLA, DERNAHAMSHA, DERNAHATTEN, DERNAHINCH, DERNALOSSET, DERNAMUCK, DERNAVED, DERRILLA, DERRINTONNY, DERRY (MONAGHAN BY), DERRYALLAGHAN, DERRYARRIT, DERRYARTRY, DERRYBEG, DERRYCROSSAN, DERRYDORRAGHY, DERRYGASSAN LOWER, DERRYGASSAN UPPER, DERRYGOLA, DERRYGORRY, DERRYHALLAGH (TROUGH BY), DERRYHEE, DERRYHELLAN, DERRYHOOSH, DERRYKINARD

(TROUGH BY), DERRYKINNIGH BEG, DERRYKINNIGH MORE, DERRYLEA (MONAGHAN BY), DERRYLEA (TROUGH BY), DERRYLEA BEG, DERRYLEA MORE, DERRYLEEDIGAN, DERRYLEEDIGAN (JACKSON), DERRYLEGGAN, DERRYLEVICK, DERRYLUSK (ED CLONES), DERRYNAGAD, DERRYNAGREW, DERRYNAMESCO, DERRYNANAMPH, DERRYNARGET, DERRYNASELL EAST, DERRYNASELL WEST, DERRYNASHALLOG, DERRYRELLAN, DERRYVEAGH, DERRYVEEN, DESERT, DOAGHEYS, DONAGH, DOOGARY, DROMORE (MONAGHAN BY), DROMORE (TROUGH BY), DRUMACASLAN, DRUMACRUTTAN (ED TEHALLAN), DRUMADDAGORRY, DRUMADDARAINY, DRUMAGELVIN (MONAGHAN BY), DRUMARD, DRUMARRELL, DRUMARTIGAN, DRUMAVEALE, DRUMBANAGHER, DRUMBARNET, DRUMBEAR, DRUMBENAGH, DRUMBIER, DRUMBIN, DRUMBIRN, DRUMBRISTAN, DRUMBURE, DRUMCAW (TROUGH BY), DRUMCONDRA, DRUMCONNELLY, DRUMCOO (BRADY), DRUMCOO (FOSTER), DRUMCOO (JACKSON), DRUMCOO (WOODS), DRUMCRU (DICKSON), DRUMCRU (RENWICK), DRUMDART, DRUMDESCO, DRUMFERNASKY, DRUMFURRER, DRUMGAGHAN, DRUMGARN, DRUMGARRAN (DARTREE BY), DRUMGARRAN (MONAGHAN BY), DRUMGEENY (TROUGH BY), DRUMGOASK, DRUMGOAST, DRUMGOOLE, DRUMGUILL, DRUMHILLAGH (MONAGHAN BY), DRUMINANE, DRUMLARA, DRUMLESTER, DRUMLISH, DRUMLOO, DRUMMACONOR, DRUMMANS, DRUMMULLY (TROUGH BY), DRUMNAGAVLIN, DRUMNOLAN, DRUMREASK, DRUMRUTAGH, DRUMSCOR, DRUMSHANNY, DRUMSHEAVER, DRUMSHEENY (TROUGH BY), DRUMSLAVOG, DRUMSLOE, DRUMTURK (TROUGH BY), DRUMULLY (DARTREE BY), DRUMUMMERY, DUNDIAN, DUNDONAGH, DUNDRUMMAN, DUNGILLICK, DUNMADIGAN, DUNSINARE, DUNSRIM, EDEN ISLAND, EDENAFORAN, EDENBRONE (ED SCOTSTOWM), EDENMORE (ED KILLYLOUGH), EDENMORE (ED SHANMULLAGH), ELDRON, ELVEY, EMY, ENAGH (TROUGH BY), ESHACRIN, ESHCLOGHFIN, ESHNAGLOGH, ESKER, FASTRY, FAULKLAND, FEDOO, FEEBAGHBANE, FEEBAGHDUFF, FEEBANE, FIGANNY, FIGULLAR, FOREMASS, FORMOYLE, FOXHOLE, GALLANAGH, GARRAN (ED ST TIERNEY), GARRAN ITRA, GARRAN OTRA OR GIBRALTAR, GILFORD, GIRFIN, GLASDRUMMAN, GLASLOUGH, GLASMULLAGH, GLEAR, GLEBE, GLEN BEG, GLEN MORE, GLENNAN, GOLA, GOLA ENGLISH, GOLA IRISH, GOLAN, GOLANDUFF, GOLREE, GORTAKEEGHAN, GORTICLEAVE, GORTMONEY, GORTMORE NORTH, GORTNAWHINNY, GRAFFAGH, GRANSHA BEG, GRANSHA MORE, GREAGH (ED KILLYLOUGH), GREAGH (TROUGH BY), GRIGGY, HILLHALL, HILTON DEMESNE, INISHAMMON, INISHDEVLIN, ISLANDS, ITEREERY, IVY HILL, KEENOG, KIBBERIDOG, KILCORRAN, KILCRAN, KILCREEN, KILCUMBER, KILDOAGH, KILFAHAVON, KILGORMLY, KILLAKEADY, KILLANNY, KILLATTEN, KILLEANLY, KILLEEF, KILLINA, KILLYBERN, KILLYBOLEY (TROUGH BY), KILLYBOUGH, KILLYBREEN, KILLYBRESSAL, KILLYBRONE, KILLYCARNAN, KILLYCARNAN NORTH, KILLYCARNAN SOUTH, KILLYCARRAN, KILLYCONIGAN (MONAGHAN BY), KILLYCONIGAN (TROUGH BY), KILLYCOOLY, KILLYCOONAGH, KILLYCORRAN, KILLYCREEN, KILLYCRONAGHAN, KILLYCUSHIL, KILLYDONAGH, KILLYDONNELLY, KILLYDREEN, KILLYDRUTAN, KILLYFARAGH, KILLYFARGY, KILLYGAVNA, KILLYGOWAN, KILLYGRALLAN, KILLYHOMAN, KILLYKEERAGH, KILLYLARAGH, KILLYLECK (ANKETELL), KILLYLECK (LUCAS), KILLYLEEN, KILLYLOUGH, KILLYLOUGHAVOY, KILLYMARRAN, KILLYMURRY, KILLYNEILL, KILLYREAN LOWER, KILLYREAN UPPER, KILLYREASK, KILLYSLAVAN, KILLYTUR, KILMORE EAST (MONAGHAN BY), KILMORE WEST (MONAGHAN BY), KILNACLOY, KILNADREEN, KILNAGEER, KILNAGULLAN, KILNAHALTAR, KILNAMADDY (DARTREE BY), KILTUBBRID (TROUGH BY), KILTYBEGS (TROUGH BY), KILVEY, KINCORRAGH, KNOCKABEANY, KNOCKACONNY, KNOCKACULLION, KNOCKACUNNIER, KNOCKAKIRWAN, KNOCKANEARLA, KNOCKAPHUBBLE, KNOCKATALLAN, KNOCKBALLYRONEY, KNOCKBOY, KNOCKCONAN, KNOCKCOR (MONAGHAN BY), KNOCKINURE, KNOCKNACARNEY, KNOCKNAGEEHA, KNOCKNAGRAT, KNOCKNAGRAVE, KNOCKNALUN, KNOCKNASAVE, KNOCKROE, KNOCKRONAGHAN, LARGY, LATGALLAN, LATGEE, LATLORCAN, LEEK, LEGACURRY (TROUGH BY), LEGARHILL, LEGNAKELLY, LEITRIM (MONAGHAN BY), LENAGH, LENNAGHT, LEONARDS ISLAND, LETGONNELLY, LETLOONIGAN, LISABUCK, LISAVARGY, LISBANE, LISBOY, LISCARNEY, LISCAT, LISEGGERTON, LISGALL (DARTREE BY), LISGOAGH, LISGREW, LISINAN, LISKEABRICK, LISKENNA, LISLANNAN, LISMEAGH, LISNANORE, LISNAROE FAR, LISNAROE NEAR, LISOARTY, LISROOSKY, LISSEAGH, LISTELLAN, LONGFIELD (DARTREE BY), LOOART, LOUGHOOONY, LOWERTOWN, LUPPAN, MAGHERANURE, MAGHERARNY, MAGHERY, MILLIGAN, MONMURRY, MOUNT ANKETELL, MOY (TROUGH BY), MULLABRACK, MULLABRACK (SCOTT), MULLABRACK (SHAW), MULLABRYAN, MULLADERMOT, MULLADUFF, MULLAGH OTRA, MULLAGHADUN, MULLAGHAMORE (MONAGHAN BY), MULLAGHBANE, MULLAGHBOY (TROUGH BY), MULLAGHCOR, MULLAGHCROGHERY (MONAGHAN BY), MULLAGHDUFF (TROUGH BY), MULLAGHINSHIGO, MULLAGHMATT, MULLAGHMONAGHAN, MULLAGHMORE (TROUGH BY), MULLAGHMORE EAST, MULLAGHMORE NORTH, MULLAGHMORE WEST, MULLAGHNAHEGNY, MULLAGHPEAK,

MULLAGHSELSANA, MULLAGLASSAN, MULLALISS, MULLALOUGHAN, MULLAMURPHY, MULLAN (TROUGH BY), MULLANACASK, MULLANACLOY, MULLANACROSS (MONAGHAN BY), MULLANACROSS (TROUGH BY), MULLANAFINNOG, MULLANAMOY, MULLANANALLOG, MULLANAROCKAN, MULLANAROCKAN (PART OF), MULLANAROCKAN (PART OF), MULLANAVANNOG, MULLANDAVAGH, MULLANDERG, MULLANLARY, MULLANTIMORE, MULLATIGORRY, MULLATISHAUGHLIN, MULLYERA (ED SCOTSTOWN), MULLYERA (ED TEDAVNET), MULLYJORDAN, MULLYNAHINCH, MULLYNURE, MUNNILLY, NART (ED CLONES), NEWGROVE, NOOK, POINT, PORTINAGHY, PULLIS, QUIGLOUGH, RACONNELL, RAFEENAN, RAFLACONY, RAKELLY, RALAGHAN, RAMOY, RARUTAGH, ROOSKY (MONAGHAN BY), RORANNA, ROSEFIELD, ROSSARRELL, ROUGH HILL, SANDHILLS, SCARNAGEERAGH OR EMYVALE, SCARVY, SEAVEAGH, SELLOO, SHANCO (TROUGH BY), SHANKILL (DARTREE BY), SHANMULLAGH (TROUGH BY), SHANMULLAGH NORTH, SHANMULLAGH SOUTH, SHANROE, SHEE, SHEETRIM (ED BELLANODE), SHELVINS, SHESKIN, SILLIS, SKEACHORN, SKEAGARVEY, SKEAGH, SKEATRY, SKERVAN, SKINNAGIN (MONAGHAN BY), SKINNAGIN (TROUGH BY), SKINNAHERGNA, SOGHER, SRANANNY, SRUVEEL, STRACLEVAN, STRACRUNNION, STRAGHAN OR CORNASORE, STRAMACKILROY, STRAMORE, STRANAGARVAGH, STREANDUFF, TAMLAT (ED TEHALLAN), TAMLAT (TROUGH BY), TANDERAGEE, TATTINDONAGH, TATTYGARE (MONAGHAN BY), TAVANAGH, TEDAVNET, TEEHILL, TELAYDAN (MONAGHAN BY), TELAYDAN (TROUGH BY), TEMPLETATE (DARTREE BY), TEMPLETATE (MONAGHAN BY), TERAVERTY, TERRYCAFFE, TERRYTOLE, THORNHILL, TIRAMOAN, TIRAVERA, TIRCOONEY, TIRERAN, TIRKEENAN, TIRMADOWN, TIRNAHINCH FAR, TIRNAHINCH NEAR, TIRNAMONA, TIRNANEILL, TIRNASKEA NORTH, TIRNASKEA SOUTH, TONINTLIEVE, TONYCLEA, TONYCOOGAN, TONYFINNIGAN, TONYFOHANAN, TONYGARVEY, TONYHAMIGAN, TONYNUMERY, TONYSHANDENY, TONYSILLOGAGH, TONYSTACKAN, TUCKMILLTATE, TULLAGHAN, TULLEEVIN, TULLY (ED MONAGHAN), TULLY (ED TEDAVNET), TULLY (TROUGH BY), TULLYARD (TROUGH BY), TULLYBRYAN, TULLYCALLICK, TULLYCROMAN, TULLYGONY (ED TEDAVNET), TULLYGONY (ED TEHALLAN), TULLYGRIMES, TULLYHIRM, TULLYHUMPHRY, TULLYKENNY, TULLYLISH, TULLYLONE, TULLYNANURE, TULLYREE, TULLYVOGY, URLISH, WHITE ISLAND

COUNTY ROSCOMMON TOWNLANDS

ACRES, AGHABEHY, AGHACARRA, AGHAFIN, AGHAGOWLA, AGHAWARACAHILL, AGHNAGRANGE, AGHOO, AGHRAFINIGAN, ALDERFORD, ALTAGOWLAN, ALTOGHIL, ANNACLOGHAN, ANNAGH, ANNAGHBEG, ANNAGHMAGURTHAN, ANNAGHMONA, ARDANAFFRIN, ARDCARN, ARDCHAMOYLE, ARDCOLAGH, ARDCOLLUM, ARDCONRA, ARDCORCORAN, ARDEASH, ARDGLASS, ARDKEENAGH, ARDLAVAGH, ARDMACROAN, ARDMORE (ED CROGHAN), ARDMORE (ED TIVANNAGH), ARDMOYLE, ARDSALLAGH, ASSAUN, BALLAGH, BALLINDREHID, BALLINPHUILL, BALLINVILLA, BALLINVOHER, BALLYARDAN, BALLYBAUN, BALLYCULLEEN, BALLYFORMOYLE, BALLYKEEVICAN, BALLYLUGNAGON, BALLYMORE EAST OR CORBALLY, BALLYMORE WEST, BALLYNANULTAGH, BALLYTRASNA, BEALRAGH, BEHY (ED BALLYFORMOYLE), BEHY (ED BREEDOGE), BELLSPARK, BLACKFALLOW, BODORRAGHA (ED AGHAFIN), BOHERROE, BOLARRY, BRACKLOON, BREANDRUM, BREANLETTER, BRIDGECARTRON OR DERRYCASHEL, BRISLASH, BRYAN BEG, BRYAN MORE, BUNREAGH, CAMLIN, CANBO, CARKFREE, CARRICKADRAAN, CARRICKMORE, CARRICKNASHEE, CARRIGEEN, CARRIGEENCARRAGH, CARROW BEG, CARROW MORE, CARROWARD, CARROWBAUN, CARROWCUILL, CARROWKEEL, CARROWKEEL (ED BREEDOGE), CARROWMORE, CARROWMORE (ED KILLUMMOD), CARROWMORE (ED ROCKINGHAM), CARROWNAGAPPUL, CARROWNAGASHEL, CARROWNAGEERAGH, CARROWNANALT, CARROWREAGH, CARTRON, CARTRON (ED CROSSNA), CARTRON (ED DANESFORT), CARTRON (KING), CARTRONAGLOGH, CARTRONAVALLY, CASHEL, CASHELFINOGE OR LUGNAMUDDAGH, CASTLETENISON DEMESNE, CASTLETOWN, CAVETOWN OR BALLYNAHOUGH, CHARLESTOWN, CHURCH HILL, CHURCHACRES, CLEAHEEN, CLEEN, CLEGNA, CLOGHER, CLOGHER, CLOONACARROW, CLOONAGHBAUN, CLOONAVERRY, CLOONCOMMON MORE, CLOONCOOSE, CLOONCRUFFER, CLOONEIGH, CLOONFAD, CLOONFAD BEG, CLOONFAD MORE, CLOONGOWNAGH, CLOONGREAGHAN, CLOONKEEN, CLOONMAAN, CLOONMACMULLAN, CLOONSHAGHAN, CLOONSHANNAGH (ED KILMORE), CLOONSKEEVEEN, CLOONTEEM, CLOONYBRIEN, COOLADYE, COOLNAGRANSHY, COOTEHALL, COPSE, CORBALLY EAST, CORBALLY MIDDLE, CORBAUN, CORDERRY, CORDREHID, CORGLASS, CORGORMAN, CORGULLION, CORLIS, CORNACARTA, CORNAGEE, CORNAGREA, CORNAMUCKLAGH, CORNASLEECHAN, CORNAVEAGH, CORRALARA, CORRATRENCH, CORRY, CORRY, CORTOBER, CROGHAN, CROSSHILL, CROSSNA, CUILBALKEEN, CUILKEEL, CUILLARD,

CUILMORE, CUILTABOOLIA, CUILTYCONEEN, CUILTYCONWAY, CUILTYGOWER,
 CULLEENATREEN OR FLAGFORD, CURRAGHNABOLEY, DACKLIN, DANESFORT, DANGAN
 (KING), DANGAN (NUGENT), DAVIS ISLAND, DEERPARK (ED BOYLE RURAL), DEERPARK (ED
 DANESFORT), DERGRAW, DERRAUN, DERREEN, DERREENAGAN, DERREENAHINCH,
 DERREENANARRY, DERREENANNAGH, DERREENARGAN, DERREENASALT, DERREENASOO,
 DERREENATAWY, DERREENAVOGGY, DERREENTUNNY, DERRINISKY, DERRYCASHEL,
 DERRYGIRRAUN, DERRYHERK, DERRYLOW, DERRYMAQUIRK, DERRYNADOOEY,
 DERRYNAGALLION, DERRYNASKINEEN, DERRYVUNNY, DERRYWANNA, DOOGARY, DOON,
 DORRARY, DRISHOGE, DROMORE (ED AGHAFIN), DROMORE (ED TUMNA NORTH),
 DRUMAMOODAN, DRUMANILRA OR MOUNTEAGLE, DRUMANONE, DRUMATYBONNIFF,
 DRUMBOYLAN, DRUMBRICK, DRUMBRISNY, DRUMCLEAVRY, DRUMCORMICK, DRUMDAFF,
 DRUMDOE, DRUMERCOOL, DRUMERR, DRUMHARLOW, DRUMLAHARD, DRUMLION,
 DRUMSHANNAGH, DRUMSILLAGH (ED OAKPORT), DRUMSILLAGH (ED TUMNA SOUTH),
 EMLAGH, EMLAGH, ENAGH, ERRIRONAGH, ERRIS, ESTERSNOW, EVIKEENS,
 FARRANAGALLIAGH, FARRANAGALLIAGH EAST, FARRANAGALLIAGH WEST, FAWNANIERIN,
 FAWS, FINNOR, FOSTRAGH, FOXHILL, GARROWLOUGHER, GIDDAUN, GLASDRUMMAN,
 GLEBE (ED BOYLE RURAL), GLEBE (ED DANESFORT), GLEBE (ED KEADEW), GLEBE (ED
 ROCKINGHAM), GLOORIA (ED CROGHAN), GLOORIA (ED TUMNA SOUTH), GORTLECK,
 GRALLAGH BEG, GRALLAGH MORE, GRANGE (ED AUGHRIM EAST), GRANGE BEG, GRANGE
 MORE, GRANNY, GREAGH, GREAGHACORRA, GREAGHNAFARNA, GREAGHNAGEERAGH,
 GREAGHNAGLOGH, GREAGHNALEAVA BEG, GREAGHNALEAVA MORE, GREATMEADOW,
 GREVISK, GREYFIELD, GUBBARUDDA, HAREPARK, HUGHESTOWN, KEADEW EAST, KEADEW
 WEST, KEELOGES, KILBRIDE, KILBRYAN, KILCANORAN, KILCOLAGH, KILCROY, KILFAUGHNA,
 KILGARVE, KILLAPPOGE, KILLERDOO, KILLINADDAN, KILLUKIN, KILLUMMOD, KILMACARRIL,
 KILMACROY, KILMORE, KILRONAN MOUNTAIN, KILTEASHEEN, KILTYBRANNOCK,
 KILTYCREAGHTAN, KINGSLAND, KNOCKACORHA, KNOCKACULLEEN OR HOLLYMOUNT,
 KNOCKADAFF, KNOCKADALTEEN, KNOCKADOO, KNOCKADOBRUSNA, KNOCKADREHID,
 KNOCKADRYAN, KNOCKANANIMA, KNOCKARUSH, KNOCKAVREANEEN, KNOCKAVROE,
 KNOCKGLASS, KNOCKNABEAST, KNOCKNACARROW, KNOCKNACLOY, KNOCKNAFUSHOGA,
 KNOCKNASHEE, KNOCKRANNY, KNOCKROE (ED KILLUMMOD), KNOCKROE (ED OAKPORT),
 KNOCKROE (ED RUSHFIELD), KNOCKVICAR, LACKAGH, LACKAN, LACKAN (ED AUGHRIM
 EAST), LAHAGBOY, LAUGHIL, LEAM, LECARROW, LECARROW (ED AUGHRIM WEST), LEGVOY
 OR GARDENSTOWN, LETFORDSPARK, LISCOLVAN, LISDALY, LISFARRELLBOY,
 LISGREAGHAN, LISLEA, LISMULKEARE, LISNANURAN, LISSEVIN, LISSERDREA, LODGE,
 LOWFIELD, LOWPARKS, LUGNASHAMMER, LURGA, LURGABOY, LURGAN, LURRAGA, LUSTIA,
 LYONSTOWN, MACNADILLE, MARTRY, MEERA, MOCMOYNE, MOHEEDIAN, MOIGH,
 MONEYDUFF, MOUNTALLEN, MOUNTPROSPECT, MOYGLASS (ED CLOONTEEM), MOYORAN,
 MULLAGHLUSKY, MULLAGHMORE, MULLAUN, OAKPORT DEMESNE, OLDTOWN, PADDOCK,
 PART OF AGHAFIN, PART OF AGHAFIN, PART OF CARROWMORE, PART OF CUILBALKEEN,
 PART OF CUILLARD, POLLOWER, PORTOBELLO, POWELLSHILL, RATALLAN, RATHDIVEEN,
 RATHEVIN, REYCROFTSPARK, RINN, ROCK, ROCKHILL, ROCKINGHAM DEMESNE (ED BOYLE
 RURAL), ROCKINGHAM DEMESNE (ED ROCKINGHAM), ROVER LOWER, ROVER UPPER,
 RUNNABOLL, RUNNARODDAN, RUSH HILL, RUSHEEN, SCREGG, SELTANNAVEENY,
 SHANBALLYBAUN, SHEEGOREY, SKEAGH, SMUTTERNAGH, SPA, SRABRA, SRABRAGAN,
 SRANANOOAN, SROANKEERAGH, STONEPARK, TAWLAGH (ED AGHAFIM), TAWLAGHT (ED
 KILLUKIN), TAWNAGH MORE, TAWNYTASKIN, TERMON, TIMPAUN, TINACARRA, TINTAGH,
 TIVANNAGH, TOBBERATARAVAN, TONROE OR CREEN, TONROE OR FEENAGH, TOOLOSCAN,
 TOORMORE, TOORMARTIN, TOURNAGEE, TREANAGRY, TREANAMARLY, TULLAGHAN,
 TULLYBOY, TULLYLEAGUE, TULLYNAHAW, TULLYTAWEN, TULLYVAL, TULLYVOHAUN,
 TUMNA, TURLAGH, TURLAGH, USNA, WARREN OR DRUM, WOODBROOK

COUNTY SLIGO TOWNLANDS

ABBEYQUARTER NORTH, ABBEYQUARTER SOUTH, ABBEYTOWN, ABBEYVILLE OR
 ARDLAHERTY, ACHONRY, AGHAGAD, AGHALENANE, AGHAMORE FAR, AGHAMORE NEAR,
 AGHAMORE NEAR (PART OF), AGHANAGH, AGHARROW, AGHOO, ALTANELVICK, ALTVELID,
 ANDRESNA, ANNAGH (LEYNY BARONY), ANNAGH (TIRERRILL BARONY), ANNAGH BEG,
 ANNAGH BEG (PART OF), ANNAGHCARTHY, ANNAGHCOR, ANNAGHGOWAN, ANNAGHLOY,
 ANNAGHMORE (COOLAVIN BARONY), ANNAGHMORE (LEYNY BARONY), ANNAGHMORE
 (TIRERRILL BARONY), ARDABRONE, ARDAGH, ARDCONNELL, ARDCOTTEN, ARDCREE,
 ARDCUMBER, ARDCURLEY, ARDGALLIN, ARDGIVNA, ARDKEERAN (CORRAN BARONY),
 ARDKEERAN (TIRERRILL BARONY), ARDLEE, ARDLEEBEG, ARDLIN, ARDLONA, ARDLOY,
 ARDMINNAN, ARDMOYLE, ARDNAGLASS, ARDNAGLASS LOWER, ARDNAGLASS UPPER,

ARDNEESKAN, ARDOGELLY, ARDRAHEEN BEG, ARDRAHEEN MORE, ARDREA, ARDREE, ARDSALLAGH, ARDSOREEN, ARDTERMON, ARDTRASNA, ARDVARNEY, ARNASBRACK, ATTIDUFF, ATTIVILLE, AUGHNACLOY, AUGHRIS (CORRAN BARONY), AUGHRIS (TIRERAGH BARONY), BAGHLOONAGH, BALLAGHBOY, BALLARD, BALLINAFAD, BALLINCAR, BALLINCASTLE, BALLINCURRY, BALLINDOON, BALLINEDEN, BALLINLIG (TIRERAGH BARONY), BALLINLIG (TIRERRILL BARONY), BALLINPHULL (ED CLIFFONY NORTH), BALLINPHULL (ED LISSADILL EAST), BALLINPHULL (ED TEMPLEBOY SOUTH), BALLINPHULL (ED TOBERPATRICK EAST), BALLINPHULL (TIRERRILL BARONY), BALLINTEMPLE, BALLINTROFAUN, BALLINVALLY (ED CARROWNASKEAGH), BALLINVALLY (ED STREAMSTOWN), BALLINVALLY EAST, BALLINVALLY OR ROADSTOWN, BALLINVALLY WEST, BALLINVOHER (CARBURY BARONY), BALLINVOHER (CORRAN BARONY), BALLONAGHAN OR HARRISTOWN, BALLURE, BALLYARA (KNOX), BALLYARA OR FALDUFF, BALLYBEG (CARBURY BARONY), BALLYBRENNAN, BALLYCONNELL, BALLYCULLEEN, BALLYDAWLEY, BALLYDOOGAN, BALLYFAHY, BALLYFARIS, BALLYFREE, BALLYGILGAN, BALLYGLASS (CARBURY BARONY), BALLYGLASS (LEYNY BARONY), BALLYGRANIA, BALLYGREIGHAN, BALLYHEALY OR HOLLYBROOK DEMESNE, BALLYMOTE, BALLYMULDORRY, BALLYMULLANNY, BALLYMURRAY, BALLYNABOLL, BALLYNABROCK, BALLYNACARRIGA, BALLYNACARROW NORTH, BALLYNACARROW SOUTH, BALLYNAGALLIAGH, BALLYNAGLOGH, BALLYNAKILL, BALLYNAKILLEW, BALLYNAMONA, BALLYNARAW NORTH, BALLYNARAW SOUTH, BALLYNARY, BALLYNASHEE, BALLYSDARE, BALLYSCANNEL, BALLYSUMAGHAN, BALLYTIVNAN, BALLYWEELIN, BANADA, BARNABRACK, BARNADERG, BARNAROBIN, BARNASRAHY, BARROE, BARROE LOWER, BARROE NORTH, BARROE SOUTH, BARROE UPPER, BATTLEFIELD, BEANFIELD, BEARLOUGH, BEARVAISH, BEHY, BELCLARE, BELLADRIHID, BELLAHY, BELLANAGARRIGEENY OR CASTLEBALDWIN, BELLANALACK, BELLANASCARROW EAST, BELLANASCARROW WEST, BELLANASCARVA, BELLANODE, BELLANURLY, BELLARUSH, BELLAWILLINBEG, BELRA, BILLA, BINGANAGH, BLEACHGREEN, BOLEYMOUNT, BRACKCLOONAGH, BRANCHFIELD, BREAGHWY, BREEOGE, BRICKEEN, BRICKLIEVE, BROCKAGH, BROUGHER, BULLAUN, BUNDUFF, BUNINNA, BUNNACRANAGH, BUNNADOBER, BUNNAFEDIA, BUNNAMUCK, CABRAGH (TIRERRILL BARONY), CALTERAUN, CALTRAGH (CARBURY BARONY), CALTRAGH (ED TOBERPATRICK EAST), CAMROSS, CAMS, CAPPAGH (CORRAN BARONY), CAPPAGH (LEYNY BARONY), CARHA, CARNAWEELEEN, CARNCASH, CARNEY (JONES), CARNEY (O), CARNS (CARBURY BARONY), CARNS (DUKE), CARNS (LEYNY BARONY), CARNYARA, CARRAUN (ED BANADA), CARRAUN (ED TOBERCURRY), CARRICKARD, CARRICKBANAGHER, CARRICKCOOLA, CARRICKGLASS, CARRICKHAWNA, CARRICKHENRY, CARRICKNAGAT (TIRERRILL BARONY), CARRICKNAGRIP, CARRICKNAHORNA EAST, CARRICKNAHORNA WEST, CARRICKONEILLEEN, CARRICKRATHMULLIN, CARRIGANS LOWER, CARRIGANS UPPER, CARRIGEEN, CARRIGEENAGOWNA, CARRIGEENBLIKE, CARRIGEENBOY (ED COLLOONEY), CARRIGEENBOY (ED KILMACTRANNY), CARRIGEENMORE, CARRIGEENS (CARBURY BARONY), CARRIGEENSALLAGH, CARROWARD, CARROWBLEAGH EAST, CARROWBLEAGH WEST, CARROWBRICKEEN, CARROWBUNNAUN, CARROWCARRAGH, CARROWCASHEL (ED BALLYNASHEE), CARROWCASHEL (ED RIVERSTOWN), CARROWCASLAN, CARROWCAULY OR EARLSFIELD, CARROWCLARE, CARROWCLOONEEN, CARROWCONOR, CARROWCRIN (CARBURY BARONY), CARROWCRIN (TIRERRILL BARONY), CARROWCRORY, CARROWCULLEEN, CARROWCUSHCLY, CARROWDOUGH, CARROWDURNEEN, CARROWFLATLEY OR CARROWNAGLOGH, CARROWGAVNEEN, CARROWGILHOOLY, CARROWGILPATRICK, CARROWGOBBADAGH, CARROWKEEL (CARBURY BARONY), CARROWKEEL (CORRAN BARONY), CARROWKEEL (ED BALLYNAKILL), CARROWKEEL (ED RIVERSTOWN), CARROWKEEL (ED TEMPLEVANNY), CARROWKEEL (LEYNY BARONY), CARROWKEEL (TIRERAGH BARONY), CARROWLOUGHAN EAST, CARROWLOUGHAN WEST, CARROWLOUGHLIN, CARROWLUSTIA, CARROWMACLENANY, CARROWMORE (CARBURY BARONY), CARROWMORE (LEYNY BARONY), CARROWMORE (TIRERRILL BARONY), CARROWMORRIS, CARROWMURRAY, CARROWNABANNY, CARROWNABOLL, CARROWNACARRICK, CARROWNACLEIGHA, CARROWNACREEVY (CORRAN BARONY), CARROWNACREEVY (ED AUGHRIS), CARROWNACREEVY (ED DROMARD EAST), CARROWNACREEVY (LEYNY BARONY), CARROWNADARGNY, CARROWNAGAPPUL, CARROWNAGARK, CARROWNAGH, CARROWNAGILTY, CARROWNAGLERAGH, CARROWNAGUIVNA EAST, CARROWNAGUIVNA WEST, CARROWNAKNOCKAN, CARROWNALECK, CARROWNAMADDOO (ED BALLINTOGER WEST), CARROWNAMADDOO (ED ROSSINVER WEST), CARROWNAMADDOO (TIRERAGH BARONY), CARROWNANTY, CARROWNASKEAGH, CARROWNATEEWAUN, CARROWNAUN, CARROWNAWORAN, CARROWNEDEN (LEYNY BARONY), CARROWNLEAM, CARROWNLOBAUN,

CARROWNLOUGHAN, CARROWNREE (CORRAN BARONY), CARROWNREE (TIRERAGH BARONY), CARROWNSPURRAUN, CARROWNTAWA, CARROWNTAWY, CARROWNTEANE, CARROWNTEMPLE, CARROWNTOBER, CARROWNURLAR (ED AUGHRIS), CARROWNURLAUR, CARROWNYCLOWAN, CARROWREAGH (COOPER), CARROWREAGH (ED OWENMORE), CARROWREAGH (ED TOOMOUR), CARROWREAGH (KNOX), CARROWREAGH (LEYNY BARONY), CARROWREAGH (TIRERAGH BARONY), CARROWREAGH (TIRERRILL BARONY), CARROWREILLY, CARROWROE, CARROWWILKIN, CARTRON (CARBURY BARONY), CARTRON (HONORIA DUFF), CARTRON (PERCIVAL), CARTRON (PHIBBS), CARTRON (TIRERRILL BARONY), CARTRONABREE, CARTRONAVALLY, CARTRONDUFFY, CARTRONHUGH, CARTRONKILLERDOO, CARTRONMORE, CARTRONOFARRY EAST, CARTRONOFARRY SOUTH, CARTRONOFARRY WEST, CARTRONPLANK, CARTRONROE (CORRAN BARONY), CARTRONROE (TIRERRILL BARONY), CARTRONTAYLOR, CARTRONTONLENA, CARTRONWILLIAMOGE, CASHEL NORTH, CASHEL SOUTH, CASHELGARRAN, CASTLEDARGAN, CASTLEGAL (ED CLIFFONY NORTH), CASTLEGAL (ED GLENCAR), CASTLEGOWAN, CASTLELOYE, CASTLEORE, CASTLEROCK OR CASTLECARRAGH, CHACEFIELD, CHAFFPOOL, CHURCH HILL, CLADDAGH, CLARAGH IRISH, CLARAGH SCOTCH, CLEAVERAGH DEMESNE, CLEAVRY, CLETTY, CLOGH, CLOGHBOLEY, CLOGHCOR, CLOGHER, CLOGHER BEG, CLOGHER MORE, CLOGHERREVAGH, CLOGHFIN, CLOGHMINE, CLOGHOGE LOWER, CLOGHOGE UPPER, CLOONACALTRY, CLOONACLEIGHA, CLOONACOO, CLOONACURRA, CLOONAGAHAUN, CLOONAGASHEL, CLOONAGH (CARBURY BARONY), CLOONAGH (CORRAN BARONY), CLOONAGH (TIRERAGH BARONY), CLOONAGH (TIRERRILL BARONY), CLOONAGUN, CLOONAHINSHIN, CLOONAKEEMOGE, CLOONAMAHAN, CLOONAMANAGH, CLOONAMEEHAN NORTH, CLOONAMEEHAN SOUTH, CLOONANURE, CLOONARAHER (CORRAN BARONY), CLOONARAHER (LEYNY BARONY), CLOONARARA, CLOONBANIFF, CLOONBANNAN, CLOONBARRY, CLOONCA, CLOONCOSE, CLOONCUNNY (COOLAVIN BARONY), CLOONCUNNY (CORRAN BARONY), CLOONCUNNY (LEYNY BARONY), CLOONDERRY, CLOONDORRAGHA, CLOONDRIHARA, CLOONEAGH, CLOONEALLY, CLOONEEN (CARBURY BARONY), CLOONEEN (ED BALLYMOTE), CLOONEEN (ED DRUMFIN), CLOONEENHUGH, CLOONEENROE, CLOONELLY, CLOONENA, CLOONERCO, CLOONGAD, CLOONGOONAGH, CLOONINGAN, CLOONKEEVY, CLOONLAHEEN, CLOONLAUGHIL, CLOONLOUGH, CLOONLURG, CLOONMACDUFF, CLOONMULL, CLOONSHANBALLY, CLOONSILLAGH, CLOONTYCARN, CLOONTYPROCKLIS, CLOONYDIVEEN, CLOONYMEENAGHAN, CLOOSKIRT, CLOYRAGH, CLOYSPARRA, CLOYSTUCKERA, CLUID, COAGH, COLGAGH, COLLINSFORD, COLLOONEY, COMMONS, CONORS ISLAND, COOLAGRAFFY, COOLANEY, COOLBEG, COOLBOCK, COOLBOY, COOLDRUMMAN LOWER, COOLDRUMMAN UPPER, COOLLEMONEEN, COOLMEEN, COOLMURLY, COOLRAWER, COOLRECUILL, COOLSKEAGH, COOLTEEN, COONEY, COOPERHILL, COOPERHILL OR GOBBADAGH, CORCORANSACRES, CORHAWNAGH, CORHOBER, CORKAGH BEG, CORKAGH MORE, CORLISHEEN, CORNAGEEHA, CORNAMUCKLAGH, CORRADO, CORRADO EAST, CORRADO WEST, CORRAY, CORREAGH, CORSALLAGH, CORSKEAGH, CORWILLICK, CRAWHILL, CREAGHADO, CREEGHASSAUN, CREEVAGH, CREEVAUN, CREEVYKEEL, CREEVYMORE, CREGG, CREGGYCONNELL, CROCKACULLION, CROSS, CROSSBOY, CUILBEG, CUILMORE, CUILNAGHERAGH, CUILPRUGHLISH, CUILSHEEGHARY BEG, CUILSHEEGHARY MORE, CUILTYDANGAN, CUILTYLOUGH, CULLAGH BEG, CULLAGH MORE, CULLEENAMORE, CULLEENDUFF, CULLY, CUMMEEN, CUNGHILL, CUPPANAGH, CURRAGHBOAUN, CURRAGHBOY, CURRAGHMORE, CURRY, CUTTEANTA, DAGHLOONAGH, DAWROS, DEECHOMADE, DEENODES, DEER PARK, DERINCH ISLAND, DERK BEG, DERK MORE, DERNASKEAGH, DERREENS, DERRINOHRAN, DERROON, DERRY, DERRY BEG, DERRY MORE, DERRYBEG, DERRYDARRAGH OR OAKFIELD, DERRYGOLAGH, DERRYLEA, DERRYLEHAN, DERRYNAGRAUG, DERRYNANEANE, DERRYNASLIEVE, DERRYSALLAGH, DOOBEG (ED DRUMFIN), DOOBEG (ED KILTURRA), DOOMORE (CORRAN BARONY), DOOMORE (LEYNY BARONY), DOON, DOONALLY, DOONALLY (ED CALRY), DOONALLY (ED DRUMCLIFF EAST), DOONAMURRAY, DOONAVEERAGH, DOONFLIN LOWER, DOONFLIN UPPER, DOONFORE, DOONGELAGH, DOONIERIN, DOONMEEGIN, DOONOWNEY, DOONSHASKIN, DOON SHEHEEN, DOORLY, DOWREA, DRANGAN OR MOUNTEDWARD, DRIMINA, DRINAGHAN (ED KNOCKNAREE), DRINAGHAN (ED ROSSINVER EAST), DRINAUN, DRINAUN BOG, DROMARD, DROMORE (ED BALLINTOGER EAST), DROMORE (ED KILMACTRANNY), DRUM EAST, DRUM WEST, DRUMANARAHER, DRUMANEEL, DRUMASKIBBOLE, DRUMBAUN, DRUMBEG NORTH, DRUMBEG SOUTH, DRUMBEG WEST, DRUMCLIFF GLEBE, DRUMCLIFF NORTH, DRUMCLIFF SOUTH, DRUMCLIFF WEST, DRUMCOLUMB, DRUMCONDRA, DRUMCORMICK, DRUMDERRY, DRUMDIVEEN, DRUMDONEY (ED KILLADOON), DRUMDONEY (ED TEMPLEVANNY), DRUMEDERALENA, DRUMEE,

DRUMFAD, DRUMFARNOGHT, DRUMFIN, DRUMKILSELLAGH, DRUMMACOOL, DRUMMARTIN, DRUMNAGOAL, DRUMNAGRANSHY, DRUMNASOOHY, DRUMRAINE (CORRAN BARONY), DRUMRAINE (TIRERRILL BARONY), DRUMROLLA, DRUMSHINNAGH, DRUMSOGHLA, DUNMORAN, EDENBAUN, EDENCULLENTRAGH OR HOLLYFIELD, EDENREAGH, EMLAGH (COOLAVIN BARONY), EMLAGH (ED DRUMRAT), EMLAGH (ED KILSHALVY), EMLAGH (PART OF), EMLAGH (TIRERRILL BARONY), EMLAGHFAD, EMLAGHGISSAN, EMLAGHNAGHTAN, ESKRAGH, EVERLAUN, FALFIN, FALLATHURTEEN, FALLOUGHER, FALNASHAMMER, FALNASOOGAUN OR ROPEFIELD, FARRANACARDY, FARRANMAURICE, FARRANYHARPY, FAUGHTS, FEENAGHMORE, FEENAGHROE, FETHERNEEN, FIDWOG, FINISKLIN (CARBURY BARONY), FINISKLIN (CORRAN BARONY), FINLOUGH, FINNED (CARBURY BARONY), FINNURE, FLOWERHILL, FORMOYLE, FOYOGES, GADDAN, GADDAN BEG, GAROKE, GERRIB BIG, GERRIB LITTLE, GLACKBAUN, GLEBE (LEYNY BARONY), GLEBE (TIRERAGH BARONY), GLEN (CARBURY BARONY), GLEN (ED BALLYNASHEE), GLEN (ED DRUMCOLUMB), GLEN LOWER, GLEN UPPER, GLENCARBURY, GLENIFF, GLENNAGOOLAGH, GLENNAWOO, GORTADERRY, GORTAKEERAN, GORTALOUGH, GORTAROWEY, GORTEEN (CARBURY BARONY), GORTEEN (COOLAVIN BARONY), GORTERMONE, GORTERSLUIN, GORTLOWNAN, GORTNADRASS, GORTNADRUNG, GORTNAGRELLY, GORTNAHOULA, GORTNALECK, GORTYGARA, GRAIGUE, GRANGE, GRANGE BEG, GRANGE EAST, GRANGE MORE, GRANGE NORTH, GRANGE WEST, GRANIAMORE, GRANIAROE, GREENAN, GRELLAGH, GREYFIELD (COOLAVIN BARONY), GREYFIELD (CORRAN BARONY), GREYFIELD (PART OF), GROGAGH, HALFQUARTER (LEYNY BARONY), HALFQUARTER (TIRERAGH BARONY), HALFQUARTER OR CURRAGHANIRON, HAZELWOOD DEMESNE, HEAPSTOWN, HIGHWOOD, KEEOLOGES, KEEOLOGYBOY, KEELTY, KEENAGHAN, KILBOGLASHY, KILBRATTAN, KILCAT, KILCREEVIN, KILCREEVIN (PHIBBS), KILCUMMIN, KILDARGANMORE, KILFREE, KILKERE, KILKILLOGE, KILLADOON, KILLALA, KILLANDY, KILLARAGHT, KILLASPUGBRONE, KILLAVIL, KILLEENDUFF (TIRERRILL BARONY), KILLERRY, KILLINED, KILLORAN NORTH, KILLORAN SOUTH, KILLURE, KILMACANNON, KILMACOWEN, KILMACTEIGE, KILMORGAN, KILNAHARRY, KILNAMANAGH, KILROSS, KILLSALLAGH, KILSELLAGH, KILSHALVY, KILSTRAGHLAN OR RAGWOOD, KILTURRA, KILTYCAHILL, KILTYCLOGHAN, KILTYCOOLY, KILTYCREEN, KILTYKERE, KILTYLOUGH, KILTYTEIGE, KILVARNET NORTH, KILVARNET SOUTH, KINCUILLEW, KINGSBOROUGH, KINGSBROOK, KINGSFORT (CORRAN BARONY), KINGSFORT (TIRERRILL BARONY), KINGSMOUNTAIN, KINKILLEW, KINNAGRELLY, KINTOGER, KNAPPAGH BEG, KNAPPAGH MORE, KNOCKACAPPUL (TIRERRILL BARONY), KNOCKADALTEEN, KNOCKADOO (LEYNY BARONY), KNOCKADOO (TIRERRILL BARONY), KNOCKAHONEY, KNOCKAHURKA, KNOCKALASS (ED KILSHALVY), KNOCKALASS (ED KILTURRA), KNOCKALOUGH, KNOCKANAGHER, KNOCKANARROW, KNOCKANIMMA, KNOCKATELTY, KNOCKATOBER, KNOCKATOTAUN, KNOCKAUN, KNOCKBEG EAST, KNOCKBEG WEST, KNOCKBRACK (CORRAN BARONY), KNOCKBRACK (LEYNY BARONY), KNOCKBREENAGHER, KNOCKGRANIA (ED DRUMRAT), KNOCKGRANIA (ED KILTURRA), KNOCKLOUGH, KNOCKMORE, KNOCKMOYNAGH, KNOCKMULDONEY, KNOCKMULLIN, KNOCKNACROSS, KNOCKNACROY, KNOCKNAGANNY, KNOCKNAGEEHA (CORRAN BARONY), KNOCKNAGEEHA (TIRERRILL BARONY), KNOCKNAGORE, KNOCKNAGROAGH, KNOCKNAHOO, KNOCKNAHUR NORTH, KNOCKNAHUR SOUTH, KNOCKNAKILLEW OR WOODHILL, KNOCKNAREA NORTH, KNOCKNAREA SOUTH, KNOCKNASHAMMER, KNOCKNASHAMMER OR CLOVERHILL, KNOCKNASHEE COMMON, KNOCKNASKEAGH, KNOCKNAWHISHOGE, KNOCKOCONOR, KNOCKRAWER (ED KILSHALVY), KNOCKRAWER (ED KILTURRA), KNOCKRAWER (TIRERRILL BARONY), KNOCKROE (ED AGHANAGH), KNOCKROE (ED BALLYNASHEE), KNOCKROE (ED LISCONNY), KNOXSPARK, LACKAGH, LAHANAGH, LAHARDAN, LARAGH, LARASS OR STRANDHILL, LARGAN (ED BALLYSDARE EAST), LARKHILL, LAUGHIL, LAVAGH (LEYNY BARONY), LAVAGH (TIRERAGH BARONY), LAVALLY (CORRAN BARONY), LAVALLY (TIRERRILL BARONY), LAVINSCARTRON, LECARROW (CARBURY BARONY), LECARROW (ED AGHANAGH), LECARROW (ED CLOONOGHILL), LECARROW (ED LAKEVIEW), LECARROW (ED OWENMORE), LECARROW (ED SKREEN), LECKLASSER, LEEKFIELD, LEITRIM NORTH, LEITRIM SOUTH, LILLYBROOK, LIMNAGH, LISBALEELY, LISBANAGHER, LISCONNY, LISCONWY, LISDOOGAN, LISDUFF (CARBURY BARONY), LISDUFF (LEYNY BARONY), LISGOREY, LISGULLAUN, LISHEENACORAVAN, LISKEAGH, LISLAHELLY, LISLARY, LISLEA (CORRAN BARONY), LISLEA (LEYNY BARONY), LISMACBRYAN, LISMERRAUN, LISNAGORE, LISNALURG, LISNARAWER, LISRUNTAGH, LISSADILL, LISSALOUGH, LISSANANNY BEG, LISSANANNY MORE, LISSANEAGH, LISSANEENA, LISSANEENY, LISSAWULLY, LISSERGLOON, LISSERLOUGH, LISSYCOYNE, LISTRUSH, LONGFORD DEMESNE, LOUGHANELTEEN, LOUGHANNACRANNOGE, LUFFERTAN, LUGACAHA, LUGATOBER, LUGAWARRY, LUGBAUN, LUGDOON, LUGNADEFFA, LUGNAGALL, LUGNAMACKAN, LURGAN (CORRAN BARONY),

LURGAN (TIRERRILL BARONY), LYLE, MAGHERA, MAGHERABOY, MAGHERAGHANRUSH OR DEER PARK, MAGHERAGILLERNEEVE OR SPRINGFIELD, MAGHERALACKAGH, MAGHERANORE, MAHANAGH, MARKREE DEMESNE, MASREAGH, MEELICK PARK, MEENMORE, MONASTERREDAN, MONEYGOLD, MONEYLAHAN, MONTIAGH, MOODOGE, MOUNT TEMPLE, MOUNT TOWN, MOUNTGAFFENY, MOUNTIRVINE, MOYDOUGH, MOYGARA, MOYLOUGH, MOYMLOUGH, MOYRUSH, MOYTIRRA EAST, MOYTIRRA WEST, MUCKELTY, MULLAGHANARRY, MULLAGHCOR, MULLAGHFARNA, MULLAGHFAN, MULLAGHGAR, MULLAGHMORE (CARBURY BARONY), MULLAGHMORE (TIRERRILL BARONY), MULLAGHMORE WEST, MULLAGHNABREENA, MULLAGHNANEANE, MULLAGHROE, MULLANABREENA, MULLANASHEE, MULLANFAD, MULLAROE, MULLAUN, MURHY, MURILLYROE, MWEELROE, NEWPARK, NEWTOWN (CARBURY BARONY), NEWTOWNCLIFFONY, OGHAM (CORRAN BARONY), OGHAM (TIRERRILL BARONY), OGHAMBAUN, OUGHAVAL, OUGHTAGOREY, PARKMORE, PHALEESH, PORTAUAUD, PORTINCH, POWELLSBOROUGH, PRIMROSEGRANGE, PULLAGH, QUARRYFIELD, RAGHLY, RAHABERNA, RAHELLY, RANAGHAN BEG, RANAGHAN MORE, RANNATRUFFAUN EAST, RANNATRUFFAUN WEST, RATHBARRAN, RATHBAUN, RATHBAUN NORTH, RATHBAUN SOUTH, RATHBRAGHAN, RATHCARRICK, RATHDOONY BEG, RATHDOONY MORE, RATHEDMOND, RATHFRASK, RATHGEEAN, RATHGRAN, RATHHUGH, RATHMACTIERNAN, RATHMADDER, RATHMAGURRY, RATHMONEY, RATHMORE, RATHMULPATRICK, RATHNAKELLIGA, RATHNARROW (BRETT), RATHNARROW (O), RATHONORAGH, RATHOSEY, RATHQUARTER, RATHRIPPIN, RATHSCANLAN, RATHTERMON, RATHTINAUN, REASK, RINBAUN, RINN (CARBURY BARONY), RINN (CORRAN BARONY), RINN (LEYNBY BARONY), RINNAROGUE, RIVERSTOWN, ROCKBROOK, ROCKFINLOUGH, ROOGHAN, ROOSKY BEG, ROOSKY MORE, ROSCRIB EAST, ROSCRIB WEST, ROSMORE, ROSS (COOLAVIN BARONY), ROSS (TIRERAGH BARONY), ROSSES LOWER, ROSSES UPPER, ROVER, RUE, RUSHEEN (ED BALLYNAKILL), RUSHEEN (ED RIVERSTOWN), SANDYHILL, SCARDAN BEG, SCARDAN MORE, SEAFIELD, SEEFIN, SEEVNESS, SESSUECOMMON, SESSUEGARRY, SESSUEGILROY, SHANCARRIGEEN OR OLDROCK, SHANCOUGH (LEYNBY BARONY), SHANCOUGH (TIRERRILL BARONY), SHANCROCK, SHANNON EIGHTER, SHANNON OUGHTER, SHEEANMORE, SHEEREVAGH, SILVERHILL, SKIBBOLECORRAGH, SKREEN BEG, SKREEN MORE, SLIEVEMORE OR KINGSMOUNTAIN, SLIEVEROE OR SIBERIA, SNIGGEEN, SOODRY, SOOEY, SPOTFIELD, SPRING GARDEN, SPRINGFIELD, SPURTOWN (DUKE), SPURTOWN LOWER, SRAGH, SRALEA, SRANANAGH, SRAREVAGH, SROOVE, STONEHALL OR CARROWNAGEERAGH, STONEPARK, STONEPARKS, STRADUFF, STREAMSTOWN (ED BALLYADARE WEST), STREAMSTOWN (ED STREAMSTOWN), STREEDAGH, TANREGO EAST OR CARROWMORE, TANREGO INTAKE, TANREGO WEST, TAP, TAWNAGH (CORRAN BARONY), TAWNAGH (TIRERRILL BARONY), TAWNAGHMORE, TAWNALION, TAWNAVOULTRY, TAWRAN, TEESAN, TEMPLEHOUSE DEMESNE, TEMPLENABREE, TEMPLEVANNY, TIEVEBOY, TIRAREE, TIRATICK, TOBERANANIA, TOBERAWNAUN, TOBERBRIDE, TOBERCURRY, TOBERNAGLASHY, TOBERNAVEEN, TOBERPATRICK, TOBERRODDY, TOBERSCARDAN, TOBERTELLY, TONAFORTES, TONAPHUBBLE, TONAPONRA, TOOMOUR, TOORARD, TOORLESTRAUN, TORMORE, TREAMMACMURTAGH, TREAMMORE (CORRAN BARONY), TREAMMORE (TIRERRILL BARONY), TREANSCRABBAGH, TULLANAGLUG, TULLY (CORRAN BARONY), TULLY (ED CALRY), TULLY (ED DRUMCLIFF EAST), TULLY (ED KNOCKNAREE), TULLY (TIRERRILL BARONY), TULLY BEG, TULLY MORE, TULLYCUSHEEN BEG, TULLYCUSHEEN MORE, TULLYHUGH, TULLYMOY, TULLYNAGRACKEN NORTH, TULLYNAGRACKEN SOUTH, TULLYNURE, TULLYVELLIA, TUNNAGH (CORRAN BARONY), TUNNAGH (TIRERRILL BARONY), TURLAGHYRAUN, TURNALAYDAN, UMMERYROE, UNION, URLAR, WHITEHILL (ED AGHANAGH), WHITEHILL (ED LAKEVIEW), WILLOWBROOK, WOODFIELD (CORRAN BARONY), WOODFIELD (TIRERRILL BARONY), WOODPARK

2. Clare Basin (2,620 Townlands; area approx. 4,060 sq km)

COUNTY CLARE TOWNLANDS

ACRES, AHAGA, AHASLA, AILLBRACK, AILLDAVORE, AILLROE BEG, AILLROE MORE, ALVA, ANNAGH, APPEVALE, ARDEAMUSH, ARDMORE, ARDNACRAA, ARDNACULLIA NORTH, ARDNACULLIA SOUTH, ARDNAGLA, ARDNAHEA, ARDRUSH, ATTYCRISTORA, AUGHAGARNA, AUGHAVINNA, AUGHISKA BEG, AUGHISKA MORE, BALLAGH, BALLARD, BALLEEN, BALLINA, BALLINGADDY EAST, BALLINGADDY WEST, BALLINY SOUTH, BALLYALLA, BALLYARTNEY, BALLYASHEEA, BALLYBAUN, BALLYBEG, BALLYBREEN, BALLYCAHAN, BALLYCASHEEN, BALLYCLANCAHILL, BALLYCLOGHESSY, BALLYCONNOE SOUTH, BALLYCORICK, BALLYCOTTEEN NORTH, BALLYCOTTEEN SOUTH, BALLYCULLAUN, BALLYCULLEENY, BALLYCURRAUN, BALLYDEELY, BALLYDONOHOE, BALLYDONOHOE, BALLYDUFF BEG, BALLYDUFF MORE, BALLYDUNEEN, BALLYEA, BALLYEA, BALLYEA NORTH, BALLYEA SOUTH, BALLYELLERY, BALLYELLY, BALLYFAUDEEN, BALLYGASTELL, BALLYGEERY EAST, BALLYGEERY WEST, BALLYGOONAUN, BALLYHEEAN, BALLYHENNA, BALLYHERRAGH, BALLYHOMULTA, BALLYILLAUN, BALLYINSHEEN BEG, BALLYINSHEEN MORE, BALLYKEEL NORTH, BALLYKEEL SOUTH, BALLYKETT, BALLYKINVARGA, BALLYKNOCK, BALLYLAAN, BALLYLEANN, BALLYMACAULA (ED KILLANNIV), BALLYMACKEA BEG, BALLYMACKEA MORE, BALLYMACLINAUN, BALLYMACOODA, BALLYMACRAVAN, BALLYMACRINAN, BALLYMACURTAUN, BALLYMAHONY, BALLYMURPHY, BALLYNABINNIA, BALLYNACALLY, BALLYNACARHAGH, BALLYNACRAGGA, BALLYNAGARD, BALLYNAGONNAGHTAGH, BALLYNAGUN EAST, BALLYNAGUN WEST, BALLYNAHOWN, BALLYNALACKAN (ED BALLYSTEEN), BALLYNALACKAN (ED CLOGHAUN), BALLYNEW, BALLYNOE, BALLYNOTE EAST, BALLYNOTE WEST, BALLYONAN OR DOONAGHBOY, BALLYSALLAGH, BALLYSHANNY, BALLYSTEEN, BALLYTARSNA, BALLYTEIGE, BALLYURRA, BALLYVARA, BALLYVASKIN NORTH, BALLYVASKIN SOUTH, BALLYVESKIL, BALLYVOE, BALLYVOE, BALLYVOHANE, BALLYVORDA, BALLYVRANNEEN, BALLYVRISLAUN, BALLYVULLAGAN, BANSHA, BARLOUGHRA, BARNANAGEEHA, BAUNMORE, BAUNTLIEVE, BEAGHY, BEALCRAGGA, BELLIA, BENEDEN, BINVORAN, BLAKESMOUNTAIN, BLEAN, BLEANMORE, BOGHIL, BOHERBOY, BOHERBULLOG, BOHYODAUN, BOLOOGHRA, BOOLAVAUN, BOOLINRUDDA, BOOLTIAGH, BOOLTIAGHADINE, BOOLTYDOOLAN, BOOLYBRIEN, BOOLYDUFF, BOOLYNAGLERAGH, BOOLYNAKNOCKAUN, BOOLYNAMISCAUN, BOOLYNAMWEEL, BOOLYNEASKA, BREAFFY NORTH, BREAFFY SOUTH, BREAGHVA, BREAGHVA, BREAGHVA (ED CLOONCOORHA), BREAGHVA (ED MOYARTA), BREAGHVA EAST, BREAGHVA WEST, BRISLA EAST, BRISLA WEST, BURRANE LOWER, BURRANE UPPER, BURREN, BURRENFADDA, BUSHYPARK, CAHERACON (ED RINEALON), CAHERADERRY, CAHERAGHACULLIN, CAHERBANNAGH, CAHERBARNAGH, CAHERBARNAGH, CAHERBLONICK NORTH, CAHERBLONICK SOUTH, CAHERBULLOG, CAHERCANNANAVAN, CAHERCLOGGAUN, CAHEREA (ED KILCLOHER), CAHEREA (ED LISHEEN), CAHEREAMORE, CAHERFEENICK SOUTH, CAHERFENNICK NORTH, CAHERKINALLIA, CAHERLEAN, CAHERLOOSKAUN, CAHERMAAN, CAHERMACATEER, CAHERMACLANCHY, CAHERMACNAGHTEN, CAHERMACON, CAHERMAKERRILA, CAHERMINNAUN EAST, CAHERMINNAUN WEST, CAHERMORE, CAHERMURPHY, CAHEROGAN, CAHERRUSH, CAHERSHERKIN, CAHERYCAHILL, CAHERYCOOSAUN, CAHIRACON (ED KILLADYSERT), CAHIRCALLA MORE, CALLURAGH EAST, CALLURAGH SOUTH, CALLURAGH WEST, CAMMOGE, CAPPAGARRAUN, CAPPAGH, CAPPALAE NORTH, CAPPALAE SOUTH, CAPPANAGEERAGH, CAPPANAKILLA, CAPPANAVARNOGE, CARHOO, CARNAUN, CARNAUN, CARNCREAGH, CARROW, CARROWBANE, CARROWBLOUGH BEG, CARROWBLOUGH MORE, CARROWDOTIA NORTH, CARROWDOTIA SOUTH, CARROWDUFF, CARROWDUFF, CARROWDUFF (ED KILLASPUGLONANE), CARROWDUFF (ED KILSHANNY), CARROWERAGH, CARROWFREE, CARROWGAR, CARROWKEEL, CARROWKEEL, CARROWKEEL EAST, CARROWKEEL WEST, CARROWKILLA, CARROWLAGAN, CARROWMANAGH NORTH, CARROWMANAGH SOUTH, CARROWMORE, CARROWMORE NORTH, CARROWMORE SOUTH, CARROWNACLOGH, CARROWNAGARRAUN, CARROWNAGRY NORTH, CARROWNAGRY SOUTH, CARROWNAHOOAN EAST, CARROWNAHOOAN WEST, CARROWNAWEELAUN, CARROWNCALLA NORTH, CARROWNCALLA SOUTH, CARROWNISKA NORTH, CARROWNISKA SOUTH, CARROWNTEDAUN, CARROWREAGH EAST, CARROWREAGH WEST, CARROWVERE, CASSARNAGH, CASTLEPARK, CASTLEQUARTER, CLAREFIELD, CLIFDEN, CLOGHAUN, CLOGHAUN BEG, CLOGHAUN BEG (EAST), CLOGHAUN BEG (WEST), CLOGHAUN MORE, CLOGHAUN MORE (EAST), CLOGHAUN MORE (WEST), CLOGHAUNBEG, CLOGHAUNDINE, CLOGHAUNINCHY, CLOGHAUNNATINNY, CLOGHAUNSAVAUN, CLOGHER, CLONDERALAW, CLOONADRUM, CLOONANAHA, CLOONARASS, CLOONAVEIGE, CLOONBONY, CLOONBOOLY, CLOONCAURHA, CLOONCOLMAN, CLOONCONEEN, CLOONCOUL, CLOONCULLIN,

CLOONDRINAGH, CLOONDRINAGH, CLOONEEN, CLOONEENAGH, CLOONEY NORTH,
 CLOONEY SOUTH, CLOONEYBREEN, CLOONEYLISSAUN, CLOONEYOGAN NORTH,
 CLOONEYOGAN SOUTH, CLOONFEAGH, CLOONFURRIHIS, CLOONGARVE, CLOONGOWNA,
 CLOONKERRY EAST, CLOONKERRY WEST, CLOONKETT, CLOONLAHEEN, CLOONLAHEEN
 EAST, CLOONLAHEEN MIDDLE, CLOONLAHEEN WEST, CLOONMACKAN, CLOONMORE,
 CLOONMORE, CLOONNAGARNAUN, CLOONNAKILLA (ED GLENMORE), CLOONNAKILLA (ED
 KILCKREEST), CLOONOMRA, CLOONREDDAN, CLOONSNAGHTA, CLOONTABONNIV,
 CLOONTOHIL, CLOONTYSMARRA, CLOONULLA, CLOONWHITE NORTH, CLOONWHITE SOUTH,
 COHY, COLMANSTOWN, COMMONAGE, COOGA, COOGYULLA, COOLEABEG, COOLMEEN,
 COOLMEEN, COOLMUNGA, COOLPEEKAUN, COOLSHINGAUN, COOLSUPPEEN,
 COOLTEENGOWAN, COOR, COOR EAST, COOR WEST, CORBALLY, CORNFIELD, CORRAIGE,
 CRAG, CRAG, CRAGBRIEN, CRAGGAKNOCK EAST, CRAGGAKNOCK WEST, CRAGGAUN,
 CRAGGAUNBOY, CRAGGYCORRADAN EAST, CRAGGYCORRADAN WEST, CRAGHERA,
 CRAGLEAGH, CRAGNAGOWER, CRAGREAGH, CREEGH NORTH, CREEGH SOUTH,
 CREEVAGH, CRININISH, CROAGHAUN (INCHQUIN BY), CROAGHAUN (ISLANDS BY),
 CRONAGORT EAST, CRONAGORT WEST, CROSS, CROSS BEG, CROSS MORE,
 CROSSCORNAUN, CROSSDERRY, CROVRAGHAN, CRUMLIN, CULLEEN, CULLENAGH,
 CULLENAGH, CURRAGHADOO, CURRAGHODEA, DANGANANELLA EAST, DANGANANELLA
 WEST, DARRAGH NORTH, DARRAGH SOUTH, DEERPARK LOWER, DEERPARK MIDDLE,
 DEERPARK UPPER, DEERPARK WEST, DEHOMAD, DERREEN, DERREEN, DERREEN (ED
 BALLYSTEEN), DERREEN (ED KILSHANNY), DERREEN SOUTH, DERRINIDDANE,
 DERROOLAGH, DERRY, DERRYBRICK, DERRYGEEHA, DERRYHARRIV, DERRYLEA,
 DERRYLOUGH, DERRYMORE, DERRYNACARRAGH, DERRYNAGEEHA, DERRYNAHEILLA,
 DERRYNALECKA (ED KILFIDDANE), DERRYNALECKA (ED KILMURRY), DERRYSHAAN, DOOLIN,
 DOOLOUGH, DOON, DOON BEG, DOONAHA EAST, DOONAHA WEST, DOONMACFELIM,
 DOONMORE, DOONNAGORE, DOONNAGURROGE, DOONOGAN, DOONSALLAGH EAST,
 DOONSALLAGH WEST, DOUGH, DOUGH, DOUGH, DRIMNA, DRINAGH, DRUMADREHID,
 DRUMANURE, DRUMANURE, DRUMATEHY, DRUMBAUN, DRUMCARNA, DRUMCULLAUN,
 DRUMCURREEN, DRUMDIGUS, DRUMDUFF, DRUMEEVIN, DRUMELLIHY (CUNNINGHAM),
 DRUMELLIHY (MAC DONNELL), DRUMELLIHY (WESTBY), DRUMELLIHY (WESTROPP),
 DRUMINSHIN, DRUMLESH, DRUMMEEN EAST, DRUMMEEN WEST, DRUMMIN (ED
 BALLYVASKIN), DRUMMIN (ED KNOCKNABOLEY), DRUMMINNAGRAN, DRUMMOHER,
 DRUMNAGAH, DUNNEILL, DURHA, DYSERT, EDENVALE, EFFERNAN, EINAGH, EMLAGH,
 EMLAGH, ENNISTIMON, ERRIBUL, FAHANLUNAGHTA BEG, FAHANLUNAGHTAMORE,
 FANALEEN, FANTA GLEBE, FARRIHY, FAUNAROOSKA (ED DERREEN), FEAGAHROGE, FEAGH,
 FEAGREEN, FEEARD, FEIGHROE, FINNOR BEG, FINNOR MORE, FINTRA BEG, FINTRA MORE,
 FODRY, FOOHAGH, FORMOYLE EIGHTERADH (EAST), FORMOYLE EIGHTERAGH (WEST),
 FORMOYLE OUGHTERAGH (EAST), FORMOYLE OUGHTERAGH (WEST), FREAGHAVALEEN,
 FREAGHCASTLE, FURRAGLAUN, FURROOR (ED FURROOR), FURROOR (ED LISCASEY),
 FURROOR LOWER, FURROOR UPPER, GARRAUN, GARRAUN, GARRAUNNATOOHA,
 GARRYNAGRY, GARVILLAUN (ED BALLYEA), GARVOGHIL, GLASCLOON, GLASHA BEG,
 GLASHA MORE, GLEBE, GLEN NORTH, GLEN SOUTH, GLENCONAUN BEG, GLENCONAUN
 MORE, GLENDINE NORTH, GLENDINE SOUTH, GLENLETTERNAFINNY, GLENMORE,
 GLENNAGEER, GORTACLOB, GORTAGANNIV, GORTALOUGHA, GORTBOFARNA,
 GORTCOOLDURRIN, GORTCURKA, GORTEENMACNAMARA, GORTKEEL, GORTMORE,
 GORTNABOUL, GORTNACLOHY, GORTNACURRA, GORTNAGLOGH, GORTNAHAHA,
 GORTNAMUCK, GORTNASKAGH, GORTNAVREAGHAUN, GORTYGEEHEEN, GOWER NORTH,
 GOWER SOUTH, GOWERHASS, GOWLAUN, GREYGROVE, ILLAUN, ILLAUNATOO OR
 SORRELISLAND, ILLAUNBAUN, ILLAUNBAUN, INCH BEG, INCH MORE, INISHAELLAUN, ISLAND,
 ISLANDGAR, KEELKYLE, KIHASKA, KILBAHA NORTH, KILBAHA SOUTH, KILBALLYOWEN,
 KILCARRAGH, KILCARROLL, KILCASHEEN, KILCLEHAUN, KILCLOHER, KILCLOHER,
 KILCOLUMB, KILCONNELL, KILCORCORAN, KILCORNAN, KILCREDAUN, KILDEEMA, KILDEEMA
 NORTH, KILDEEMA SOUTH, KILFARBOY, KILFEARAGH, KILFENORA, KILGLASSY, KILKEE
 LOWER, KILKEE UPPER, KILKERIN, KILLADYSERT, KILLARD, KILLASPUGLONANE,
 KILLEENAGH, KILLEINAGH, KILLERK EAST, KILLERK WEST, KILLERNAN, KILLINNY, KILLOFIN,
 KILMACDUANE EAST, KILMACDUANE WEST, KILMALEY, KILMIHIL, KILMOON EAST, KILMOON
 WEST, KILMORAUN, KILMORE, KILMORE, KILMORE NORTH, KILMORE SOUTH, KILMURRY
 EAST, KILMURRY WEST, KILNAGALLIAGH, KILNAMONA, KILQUANE, KILRUSH, KILTAAN,
 KILTENNAN NORTH, KILTRELLIG, KILTUMPER, KINEILTY, KINLEA, KINTURK, KNAPPOGE,
 KNOCK, KNOCK, KNOCKACARN (ED LURRAGA), KNOCKACARN (ED MAGHERAREAGH),
 KNOCKACAURHIN, KNOCKACULLEA NORTH, KNOCKACULLEA SOUTH, KNOCKADANGAN,
 KNOCKADERREEN, KNOCKAGUILLA, KNOCKALASSA, KNOCKALEHID, KNOCKALOUGH,

KNOCKANALBAN, KNOCKANEDEN, KNOCKANINAUN, KNOCKANIRA, KNOCKANULTY, KNOCKASKEHEEN, KNOCKATEMPLE, KNOCKATULLAGHAUN, KNOCKATUNNA, KNOCKAUNANERRIGAL, KNOCKAUNROE (ED DYSERT), KNOCKAUNSMOUNTAIN, KNOCKAUNVICKTEERA, KNOCKAVOARHEEN, KNOCKBRACK, KNOCKBRACK, KNOCKDRUMMAGH NORTH, KNOCKDRUMMAGH SOUTH, KNOCKERRY EAST, KNOCKERRY WEST, KNOCKKLOSKERAUN, KNOCKMORE, KNOCKMORE, KNOCKMORE, KNOCKMOY, KNOCKNAGARHOON, KNOCKNAGRAIGUE EAST, KNOCKNAGRAIGUE WEST, KNOCKNAHILA BEG, KNOCKNAHILA MORE (NORTH), KNOCKNAHILA MORE (SOUTH), KNOCKNAHOOAN, KNOCKNAHOOAN, KNOCKNARAHA, KNOCKNARANHY, KNOCKNAREEHA, KNOCKNASKEAGH, KNOCKNEPPY, KNOCKOGONNELL, KNOCKPATRICK, KNOCKPHUTTEEN, KNOCKREAGH, KNOCKROE, KNOCKROE (ED KILTORAGHT), KNOCKROE (ED MAGHERAREAGH), KNOCKSAGGART, KYLEA, KYLEATUNNA, LACK, LACK EAST, LACK WEST, LACKAMORE, LACKANNASHINAGH, LACKEN, LACKENNASKAGH, LAGHCLOON, LAGHTMURREDA, LAGHVALLY, LAKYLE NORTH, LAKYLE SOUTH, LANNA, LARAGHAKEA, LAVALLY, LAVALLY NORTH, LAVALLY SOUTH, LAVARREEN, LEADMORE EAST, LEADMORE WEST, LEAGARD NORTH, LEAGARD SOUTH, LEAHEEN, LEAMANEH NORTH, LEAMANEH SOUTH, LEAMNALEAHA, LECARROW BEG, LECARROW MORE, LECKAUN, LEEDS, LEHAKNOCK, LEHINCH, LEITRIM, LETTERAGH, LETTERKELLY, LICKEEN EAST, LICKEEN WEST, LISBIGEEN, LISCANNOR, LISCASEY, LISCOONERA, LISCORMICK, LISDEEN, LISDOONVARNA, LISDOONY EAST, LISDOONY WEST, LISGURREEN, LISHEEN, LISHEENCRONY, LISHEENFURROOR, LISHEENYDEEN, LISKET, LISLORKAN NORTH, LISLORKAN SOUTH, LISLUINAGHAN, LISMOHER, LISMORAHAU, LISMORRIS, LISMULBREEDA, LISMUSE, LISNAFAHA, LISPUCKAUN, LISROE, LISROE, LISSALOUGH, LISSANAIR, LISSATUNNA, LISSYLISHEEN, LISSYNEILLAN, LISSYVURRIHEEN, LOUGHBURKE, LOUGHNAGOWAN, LUOGH NORTH, LUOGH SOUTH, LURRAGA, MAGHERA, MAGHERA (ED BALLYEA), MAGHERA (ED RATH), MAGHERABAUN, MAGOWNA, MAGOWNA, MAGOWNA EAST, MAGOWNA WEST, MAHONBURGH, MARTRY, MARYVILLE, MEELICK, MOANANAGH, MOANMORE LOWER, MOANMORE NORTH, MOANMORE SOUTH, MOANMORE UPPER, MOANREEL NORTH, MOANREEL SOUTH, MOHERBULLOG, MOLOSKY, MOLOUGHA, MONEEN, MOOGHNA, MOUNT, MOUNTRIVERS, MOUNTSHANNON EAST, MOUNTSHANNON WEST, MOVEEN EAST, MOVEEN WEST, MOY, MOY BEG, MOY MORE, MOYADDA BEG, MOYADDA MORE, MOYARTA EAST, MOYARTA WEST, MOYASTA, MOYFADDA, MOYGLASS BEG, MOYGLASS MORE, MOYHILL, MOYHULLIN, MOYMORE NORTH, MOYMORE SOUTH, MOYNE, MUCKINISH, MWEELAGARRAUN, NEWHALL, NEWTOWN EAST, NEWTOWN WEST, NOOAF EAST, NOOAF WEST, NOOAN (ED RATH), NOUGHAVAL, OUGHTERARD, PARKNAMONEY, PORSOON, POULAPHUCA, POULAWILLIN, POULNADARREE, POULNAGUN, PROSPECT, QUERRIN, QUILTY, QUILTY EAST, QUILTY WEST, RAFLINE, RAHANISKA, RAHONA EAST, RAHONA WEST, RANNAGH (ED KILLASPUGLONANE), RANNAGH (ED LISCANNOR), RAPEPARK, RATHBAUN, RATHCRAGGAUN, RATHCRONY, RATHKERRY, RATHMEEHAN, REAGHFA, REANAGISHAGH, REHY EAST, REHY WEST, RENALICKA, RINEMACKADERRIG, RINEROE, RINNEEN, ROOSKA, ROSS, ROSSCLIFF, ROUGHAN, ROUGHAN (PART OF), ROXTON, RUSHAUN, RUSHEEN, RUSHEEN, RUSSA, SCOOL, SEAFIELD, SHALLEE, SHANAVOGH EAST, SHANAVOGH WEST, SHANBALLY, SHANDRUM, SHANGANAGH, SHANNACOO, SHANNACOO, SHANNAKEA BEG, SHANNAKEA MORE, SHANTULLA, SHEEAUN, SHEEAUN, SHESSIV, SHINGAUNAGH NORTH, SHINGAUNAGH SOUTH, SILESHAUN EAST, SILESHAUN WEST, SILVERHILL, SKAGHVICKINCROW, SLAGHBOOLY, SLIEVEALOUGHAN, SLIEVEDOOLEY, SLIEVENABILLOG, SLIEVENAGEERAGH, SLIEVENAGRY, SLIEVENALICKA, SMITHSTOWN, SOHEEN, SPAUG, SRAGH, SROOHIL, TARMON, TEERAGHBEG, TEERGONEAN, TEERLEHEEN, TEERMACLANE, TEERNAGLOGHANE, TEERVARNA, TERMON EAST, TERMON WEST, THOMASTOWN, TOBERANIDDAUN, TONAVOHER, TONLEGE, TONLEGE (ED RATH), TOOMULLIN, TOOR, TOOREEN, TOOREEN, TOOREEN EAST, TOOREEN WEST, TOORMORE, TOORNAHOOAN, TREATMANAGH, TROMRA EAST, TROMRA WEST, TROMRACASTLE, TRUSKIEVE, TULLABRACK, TULLABRACK EAST, TULLABRACK WEST, TULLAGH, TULLAGH LOWER, TULLAGH UPPER, TULLAGHABOY, TULLAGOWER, TULLAGROE, TULLAHER, TULLALOUGHAN, TULLAMORE, TULLAROE, TULLASSA, TULLIG, TULLYGREEN LOWER, TULLYGREEN UPPER, TULLYGARVAN EAST, TULLYGARVAN WEST, WOODMOUNT

COUNTY CORK TOWNLANDS

ACRES, ACRES, AGHANEENAGH, AHANE BEG, AHANE LOWER, AHANE UPPER, ANNABELLA, ANNAGLOOR, ANNAKISHA, ANNAKISHA NORTH, ANNAKISHA SOUTH, ARDAGH, ARDAPRIOR, ARDGLASS, ARDMORE, ARDNAGEEHA, ARDNAGEEHY, ASHGROVE, ASSOLAS, AUGHIRM,

BALLAGH, BALLAGHAREA, BALLINLA, BALLINOOKERY, BALLINTOBER, BALLYANDREW, BALLYBAHALLAGH, BALLYBANE, BALLYBRACK, BALLYCLOGH, BALLYDAHEEN, BALLYDALY, BALLYDINEEN, BALLYDUANE EAST, BALLYDUANE SOUTH, BALLYDUANE WEST, BALLYGOWN, BALLYGRACE, BALLYGRADY NORTH, BALLYGRADY SOUTH, BALLYHANE UPPER, BALLYHASS, BALLYHAY, BALLYHEEN NORTH, BALLYHOOLAHAN EAST, BALLYHOOLAHAN MIDDLE, BALLYHOOLAHAN WEST, BALLYHUBBO, BALLYMACMURRAGH, BALLYMAQUIRK, BALLYNAFEAHA, BALLYNAGUILLA, BALLYNAKILLA EAST, BALLYNAKILLA WEST, BALLYNAMUCK, BALLYNOE (ED GREENANE), BALLYNORAN, BALLYPHILIBEEN, BALLYPIERCE, BALLYSALLAGH, BALLYSHEHAN, BALLYTHOMAS, BALLYVINITER LOWER, BALLYVINITER MIDDLE, BALLYVINITER UPPER, BALTYDANIEL EAST, BALTYDANIEL WEST, BANNAGH, BANTEER, BARLEYHILL, BARNACURRA, BAUNOULAGH, BAWNANEEL, BAWNMORE NORTH, BAWNMORE SOUTH, BETTYVILLE, BLOSSOMFORT, BLUEFORD, BLUEPOOL, BOOLARD, BOOLYMORE, BROGHILL NORTH, BROGHILL SOUTH, BUAVANAGH, CAHERBARNAGH, CAHERDUGGAN NORTH, CAHERDUGGAN SOUTH, CAHERNAGH (LELAND), CAHERNAGH (MORGEL), CAHERNAGH EAST, CAPPANAGOUL, CAPPAPHAUDEEN, CARRIGALINE, CARRIGANES, CARRIGCASTLE, CASTLECOR DEMESNE, CASTLELISHEN, CASTLELOHORT DEMESNE, CASTLEMACAULIFFE, CASTLEMAGNER, CASTLESAFFRON, CHURCH HILL, CLARAGH BEG, CLARAGH MORE, CLARAGHATLEA NORTH, CLASH, CLASHGANNIV (ED SPRINGFORT), CLASHROE, CLASHYKINLEEN EAST, CLASHYKINLEEN WEST, CLEANRATH, CLENOR NORTH, CLENOR SOUTH, CLOGHANUGHERA, CLOGHBOOLA, CLOGHLUCAS NORTH, CLOGHLUCAS SOUTH, CLOGHVOULA, CLONFERT, CLONMEEN NORTH, CLONROBIN, CLOONBANNIN EAST, CLOONBANNIN WEST, CLOONEE, CLOONGEEL, CLOONGOWN, CLOONKEEN, CLOONLEAGH NORTH, CLOONLEAGH SOUTH, CLOONSILLAGH, CLOONTEENS, CLOONTYCOMMADE, CLYDERRAGH, COALPITS, COMMONS, COMMONS NORTH, COMMONS SOUTH, CONCEALMENT, COOLACHEESKER, COOLACOOSANE, COOLAGEELA EAST, COOLAGEELA WEST, COOLAGH, COOLANARNEY, COOLASMUTTANE, COOLAWALEEN, COOLBANE, COOLBANE (ED ALLOW), COOLBANE (ED LISCARROLL), COOLCLOGH, COOLCLOHER EAST, COOLCLOHER SOUTH, COOLCLOHER WEST, COOLDURRAGHA, COOLEEN, COOLES, COOLINEY, COOLMAHANE, COOLNAGOUR, COOLNAHANE, COOLNAHILLA, COOLNAMAGH (ED BALLYCLOGH), COOLNAMAGH (ED ROSKEEN), COOLYKEERANE, COOLYKEREEN, COOMLOGANE, COPSEFIELD, CORBALLY, CORNAHINCH, CROAGHNACREE, CROANREA, CROMAGLOUN, CROMOGE, CUMMERDUFF, CUMMERY CONNELL (NORTH), CUMMERY CONNELL (SOUTH), CURRA, CURRADUFF, CURRAGH (ED CASTLECOR), CURRAGH (ED COOLCLOGH), CURRAGH (ED KANTURK), CURRAGHAKERRY, CURRAGHALEHANE, CURRAGHANALTIG, CURRAGHANEARLA, CURRAGHCLOONABRO EAST, CURRAGHCLOONABRO WEST, CURRAGHCREEN, CURRAGHPHADEEN, CURRAGHS, CURRAGLASS, CURRAHEEN, CURRALEAGH, CURRYGLASS, CURRYMOUNT, DELLIGA, DEMESNE, DEMESNE, DERNAGREE, DERRAGH, DERREEN (ED COOMLOGANE), DERRISHAL, DERRYGALUN, DERRYLEAGH, DERRYNAMONA, DERRYNATUBBRID, DOONASLEEN EAST, DOONASLEEN NORTH, DOONASLEEN SOUTH, DOONEENS (ED DRISHANE), DOONY, DRISHANE BEG, DROMAGH, DROMAHOE, DROMALOUR, DROMANARRIGLE, DROMANEEN, DROMANIG, DROMCUMMER BEG, DROMCUMMER MORE, DROMDEER, DROMDEER EAST, DROMDEER WEST, DROMDOWNEY LOWER, DROMDOWNEY UPPER, DROMINA, DROMINAGH NORTH, DROMINAGH SOUTH, DROMINAGORE, DROMRASTILL, DROMROE COMMONS, DROMSICANE, DROMSKARRAGH BEG, DROMSKARRAGH MORE, DROMSKEHY, DROMSLIGO, DROMTARRIFF, DUARRIGLE (ED DERRAGH), DUARRIGLE (ED NEWMARKET), DUCLEAGH, DUNBARRY, DYSERT, EARLSFIELDS, EUGLAUNE, FARRANGEEL, FARRANKEAL, FARRANSHONIKEEN, FARTHINGVILLE EAST, FARTHINGVILLE WEST, FERM, FERRYFORT, FIDDANE, FIRVILLE EAST, FIRVILLE WEST, FOILADAUN, FOILOGOHIG, FORTLANDS, FREEMOUNT, GARDEEN, GARRAGORT, GARRANBAUN, GARRANE NORTH, GARRANE SOUTH, GARRANE WEST, GARRANMACGARRETT, GARRAUNAWARRIG LOWER, GARRAUNAWARRIG UPPER, GARRAUNTEEFINEEN, GARRAVEASOGE, GARRIGANE, GARRISON, GARRYNAGRANOGE, GEARANASKAGH, GLANTANE BEG, GLANTANE MORE, GLANTAUNMACARTHY, GLANYCUMMANE LOWER, GLANYCUMMANE UPPER, GLASHEENANARGID, GLENACARNEY, GLENALOUGH, GLENCOLLINS LOWER, GLENCOLLINS UPPER, GLENFIELD NORTH, GLENFIELD SOUTH, GLENGARRIFF, GLENLAHAN, GLENLARA, GLENNAKEEL NORTH, GLENNAKEEL SOUTH, GLENNAKEEL WEST, GLENNAKNOCKANE, GLENNAMUCKLAGH EAST, GLENNAMUCKLAGH WEST, GLENREAGH, GLENTANEDOWNEY, GLENTANEFINNANE, GLENTANEMACELLIGOT, GNEEVES (ED BOHERBOY), GNEEVES (ED ROSKEEN), GOOSEBERRYHILL, GORTAGEEN, GORTATEEBOY, GORTAVEHY EAST, GORTAVEHY WEST, GORTAVOHER, GORTBOFINNA, GORTEARAGH, GORTEENNAFINNOGE,

GORTKNOCKANEROE, GORTMORE, GORTNACREHA, GORTNAGARK, GORTNAGLOGH, GORTNAGOUL, GORTNAGROSS, GORTNASCREGGA, GREENANE, GREENFIELD, GREENFIELD PART OF, GRILLOUGH, GURTEEN, GURTEENARD, GURTEENBEHA, GURTEENACLOONA, GURTEENROE, GURTEENROE COMMONS, ILLAUNKNOCKNANAGH, INCHANTOTANE, INCHES, INCHIDALY, INCHILEIGH, ISLAND, ISLANDAV, ISLANDBRACK, ISLAND-DAHILL, KANTURK, KEALE NORTH, KEALE SOUTH, KEALMANAGH, KEEL, KEELTANE, KILBARRAHAN, KILBERRIHERT, KILBOLANE, KILBURN, KILCASKAN NORTH, KILCASKAN SOUTH, KILCOLMAN, KILCRANATHAN, KILGOBBAN, KILKNOCKAN, KILKNOCKANE, KILLABRAHER NORTH, KILLABRAHER SOUTH, KILLAGROHAN, KILLAREE, KILLARUSH, KILLASSERAGH, KILLAVALLIG, KILLEENLEAGH, KILLETRA, KILLETRAGH, KILLINANE (ED COOLCLOGH), KILLINANE (ED KNOCKTEMPLE), KILLOWEN, KILMACOOM, KILMAGOURA, KILMICHAEL, KILNAHULLA BEG, KILNAHULLA MORE, KILPATRICK, KILPATRICK, KILROE, KILTASS, KILTOOHIG, KINGWILLIAMSTOWN, KIPPAGH, KIPPAGH (ED BOHERBOY), KIPPAGH (ED ROSNALEE), KIPPAGH MIDDLE, KIPPAGH NORTH, KIPPAGH SOUTH, KIPPANE, KISHKEAM LOWER, KISHKEAM UPPER, KNAWHILL, KNOCKACARRACOOSH, KNOCKACLARIG, KNOCKACLUGGIN, KNOCKACUMMER, KNOCKACUR, KNOCKAGALLANE, KNOCKAGARRANE EAST, KNOCKAGARRANE WEST, KNOCKAGOLIG, KNOCKAHORREA EAST, KNOCKAHORREA WEST, KNOCKALOHERT, KNOCKANE, KNOCKANEDA, KNOCKANEGLOSS EAST, KNOCKANEGLOSS WEST, KNOCKANEROE, KNOCKARDAMRUM, KNOCKARDFREE, KNOCKARDRAHAN, KNOCKARDSHARRIV, KNOCKASTUCKANE, KNOCKATOOAN, KNOCKATOUMPANE, KNOCKAVOREEN, KNOCKAWILLIN (ED BAWNCROSS), KNOCKAWILLIN (ED TULLYLEASE), KNOCKBALLYMARTIN, KNOCKBARRY (ED LISCARROLL), KNOCKCAHILL, KNOCKCLOONA, KNOCKDUFF LOWER (ED BARLEYHILL), KNOCKDUFF LOWER (ED CULLEN), KNOCKDUFF UPPER (ED BARLEYHILL), KNOCKDUFF UPPER (ED CULLEN), KNOCKEARAGH, KNOCKEEN, KNOCKEENACURRIG EAST, KNOCKEENACURRIG WEST, KNOCKEENADALLANE (ED CULLEN), KNOCKEENADALLANE (ED KILMEEN), KNOCKEENNAGEARAGH, KNOCKFADDA, KNOCKILLY, KNOCKLAGH, KNOCKMANAGH, KNOCKNACOLAN, KNOCKNACURRAGH, KNOCKNAGEEHA EAST, KNOCKNAGEEHA NORTH, KNOCKNAGEEHA SOUTH, KNOCKNAGEEHA WEST, KNOCKNAGREE, KNOCKNALOMAN, KNOCKNAMUCK, KNOCKNAMUCKLAGH, KNOCKNANAGH COMMONS, KNOCKNANAGH EAST, KNOCKNANAGH WEST, KNOCKNASHANNAGH, KNOCKNAVORAHEE, KNOCKOUGH, KNOCKSKAVANE, KNOCKSKEHY, KNOCKYHENA, KNOCKYROURKE, KNOPPOGE, KYLE, LACKANALOOHA, LACKANASTOOKA, LACKAROE (ED LISCARROLL), LACKEEL, LAGHTSIGH, LAHARAN EAST, LAHARAN WEST, LARAGH, LEASELANDS, LISCONGILL, LISCREAGH, LISCULLANE, LISDANGAN, LISDUGGAN SOUTH, LISGRIFFIN, LISHEENAFEELA, LISHEENOWEN, LISLEAGH, LISLEHANE, LISMEELCUNNIN, LISMIRE, LISNABOY LOWER, LISNABOY UPPER, LISNACON, LISNAGROUGH, LISNASHEARSHANE, LISROBIN EAST, LISROBIN WEST, LISSANISKA, LODGE, LOHORT EAST, LOHORT EAST (PART OF), LOHORT WEST, LOMBARDSTOWN, LONGACRE, LONGACRE PART OF, LONGUEVILLE, LOUMANAGH NORTH, LOUMANAGH SOUTH, LYRANEAG, LYRAVUCKANE, LYRE (ED KNOCKTEMPLE), LYREDAOWEN, MAHANAGH, MAINE NORTH, MAINE SOUTH, MAULYCLICKEEN, MEELAHERRAGH, MEENAGLOGHRANE, MEENATARRIFF, MEENDURRAGHA, MEENEESHAL, MEENGORMAN, MEENKEARAGH, MEENNARAHEENY, MEENROE, MEENS (ED GLENLARA), MEENS (ED MEENS), MEENSKEHA EAST, MEENSKEHA WEST, MEENTINNY EAST, MEENTINNY WEST, MEENTYFLUGH, MILLEENBOY, MILLEENDUFF, MILLEENYLEGANE, MILLTOWN, MINEHILL, MOANROE, MOHER, MOHEREEN, MOUNTBRIDGET, MOUNTCORBITT, MOUNTINFANT, MOUNTKEEFFE, MOUNTNAGLE, MOUNTNORTH, MOYGE, MUCKENAGH, MUINGANINE, MULLAGHROE NORTH, MULLAGHROE SOUTH, NEWMARKET, NEWTOWN, NEWTOWN NORTH, NEWTOWN SOUTH, NOHAVAL LOWER, NOHAVAL UPPER, NOHAVALDALY, PAAL EAST, PAAL WEST, PALLAS, PARK (ED KNOCKNAGREE), PARK (ED NEWMARKET), POULAVARE, POWERSTOWN, PROHUS, PROHUST, PULLEEN, QUARTERTOWN LOWER, RAHEEN, RASCALSTREET, RATHCOOL, RATHDUANE, RATHGOGGAN MIDDLE, RATHGOGGAN NORTH, RATHGOGGAN SOUTH, RATHNACALLY, RATHNAGARD, RATHNEE, RATHRANNA, RATHROE, REA-ALLEN, REANAGASHEL, REANAHOUN, REANDALLANE, ROCKHILL EAST, ROCKHILL WEST, ROCKSPRING, ROSKEEN, ROSNAGUSSANE, ROSSACON, ROSSGLASS, ROSSLINE, ROSSNANARNEY, ROWLS (ALDWORTH), ROWLS (ALLEN), ROWLS (DAUNT), ROWLS (LANGFORD) NORTH, ROWLS (LANGFORD) SOUTH, ROWLS (NOONAN), ROWLS (SHADDOCK), RUANES, RUSHEEN, SCART (ED MILFORD), SCARTEEN, SCARTEEN LOWER, SCARTEEN UPPER, SCRAHAN, SEEDS, SHANAKNOCK, SHANAVOHER (ED KILMEEN), SHANBALLY, SHANDRUM, SHESKIN, SHINANAGH, SHRONEPOOKEEN, SKAGH, SPAGLEN, SPRING GROVE, SPRINGVILLE, TAURBEG, TAURMORE, TEERACURRA, TEEVEENY, TEMPLEMARY, TOBER, TOORARD, TOORBONEY, TOOREEN DONNELL, TOOREENAVUSCAUN, TOOREENCLASSAGH,

TOOREENCORMACK, TOOREENDERMOT, TOOREENDUFF, TOOREENFINEEN,
TOOREENGLANAHEE, TOOREENMACAULIFFE, TOOREENNAGRENA, TOOREENNAGUPPOGE,
TOOREENNAMIRE, TOOREENREAGHY, TRIENIERAGH, TULLADUFF, TULLIG, TULLYLEASE,
TWO GNEEVES (ED CULLEN), TWOPOTHOUSE, UMMERABOY EAST, UMMERABOY WEST,
URRAGHILBEG, URRAGHILMORE (EAST), URRAGHILMORE (WEST), WOODPARK

COUNTY KERRY TOWNLANDS

ACRES (ED BEAL), ACRES (ED ROCKFIELD), ADRAVAL, AGHACURREEN, AGHALEE BEG,
AGHALEE MORE, AGHANAGRAN LOWER, AGHANAGRAN MIDDLE, AGHANAGRAN UPPER,
AGLISH(ED AGLISH), AHALAHANA, AHANE(ED KNOCKNAGASHEL), AHANE(ED LAHARD),
AHANEBOY, AHAUN, ANABLAHA, ANGLONT, ANNAGHBEG, ANNAGHILYMORE, ARDAGH(ED
KILCUMMIN), ARDANEANIG, ARDFERT, ARDMEELODE, ARDS(ED LAHARD),
ARDSHANAVOOLY, ARDTEEGALVAN, ARDYDONAGAN, ARDYWANIG, ASTEE EAST, ASTEE
WEST, AUGHRIM, AULANEBANE, AULANEDUFF, AWNASKIRTAUN, BALLAGHADIGUE,
BALLAHACOMMANE, BALLAHANTOURAGH(ED CARKER), BALLAHANTOURAGH(ED
KILMURRY), BALLINARD, BALLINCOLLIG, BALLINEEDORA, BALLINGOWAN(ED BALLYSEEDY),
BALLINGOWAN(ED URLEE), BALLINILLANE, BALLINKNOCK, BALLINORIG EAST, BALLINORIG
SOUTH, BALLINRUDDERY, BALLINTOBEENIG, BALLINVOSHERIG EAST, BALLINVOSHERIG
WEST, BALLYAUKEEN, BALLYBANE, BALLYBEG(ED ARABELA), BALLYBEG(ED
KILLEENTIerna), BALLYBEGGAN, BALLYBRACK(ED KILNANARE), BALLYBRACK(ED
ROCKFIELD), BALLYBRANNAGH, BALLYBROMAN, BALLYBUNNION, BALLYCASHEEN,
BALLYCONNELL, BALLYCULLANE(ED RATHMORE), BALLYDEENLEA, BALLYDOWNY,
BALLYDRIBBEEN, BALLYDUFF(ED KNOCKNAGASHEL), BALLYDUHIG, BALLYDWYER EAST,
BALLYDWYER MIDDLE, BALLYDWYER WEST, BALLYEGAN(TRALEE RURAL DIS),
BALLYFINOGE, BALLYGARRAN, BALLYGARRET(ED KILFEIGHNY), BALLYGARRET(ED
TRIENEARAGH), BALLYGOWLOGE, BALLYGRENANE, BALLYHAR, BALLYLAHIFF, BALLYLINE
EAST, BALLYLINE WEST, BALLYMACASY, BALLYMACJORDAN, BALLYMACTHOMAS,
BALLYMAKEGOGGE, BALLYMALIS, BALLYMULLEN(ED O), BALLYNABOUL, BALLYNABRENNAGH
LOWER, BALLYNABRENNAGH UPPER, BALLYNACARRIG EAST, BALLYNACARRIG WEST,
BALLYNAGRAIGUE, BALLYNAHINCH, BALLYNAHOULORT, BALLYNAHULLA,
BALLYNAMAUNAGH, BALLYNAMUDDAGH, BALLYNASARE, BALLYNONEEN,
BALLYOUGHTRAGH NORTH, BALLYOUGHTRAGH SOUTH, BALLYREEHAN EAST,
BALLYREEHAN WEST, BALLYROE(ED CLOGHERBRIEN), BALLYSPILLANE, BALLYTRASNA(ED
AGLISH), BALLYVIRrane, BANARD, BANEMORE, BANSHAGH, BARLEYMOUNT EAST,
BARLEYMOUNT MIDDLE, BARLEYMOUNT WEST, BARNa, BARRADUFF(ED HEADFORD),
BARRADUFF(ED URLEE), BARRAKILLA, BAURAGOOGEEN, BAWNAGLANNA, BAWNARD,
BAWNASKEHY, BAWNBOY, BEAL EAST, BEAL MIDDLE, BEAL WEST, BEAUFORT, BEDFORD,
BEENATEEVAUN, BEENNAGEEHA, BEENNANASPUCK, BEHEENAGH(ED DOOCARRIG),
BEHEENAGH(ED KNOCKNAGASHEL), BEHEENAGH(ED O), BEHEENS EAST, BEHEENS WEST,
BILLERAGH, BOHERROE, BOOLACULLANE, BOOLASALLAGH, BOULANIMRISH, BRAUMADDRA,
BREAHIg(ED SCARTAGLIN), BREWSTERFIELD, BROMORE EAST, BROMORE WEST, BROSNA
EAST, BROSNA WEST, BROUGHANE, BUDDAGHAUNS, BUNAGARHA, BUNGLASHA,
BUNNARUDDEE, CAHER(ED KILLARNEY), CAHERBREAGH, CAHERCULLENAGH LOWER,
CAHERCULLENAGH UPPER, CAHERDEAN, CANGULLIA, CAPPAGH(ED KILFLYNN),
CARHOOEARAGH, CARHOONA, CARHOONAKILLA, CARHOONAKINEELY, CARHOONOE,
CARKER, CARRAN, CARRIGAFOYLE, CARRIGANE, CARRIGCANNON, CARRIGEEN,
CARRIGEENCULLIA, CARRIGEENWOOD, CARRIGNAFEELA(BALLYMACCELLIGOTT),
CARRIGNAFEELA(O), CASTLEQUARTER, CASTLETOWN, CLASH(ED KILLARNEY RURAL),
CLASHAPHUCA, CLASHEEN, CLASHNAGARRANE, CLEEDAGH, CLEENY, CLOGHANE(ED
BREWSTERFIELD), CLOGHANELESKIRT, CLOGHANENAGLERAGH, CLOGHAVOOLA,
CLOGHBOOLA, CLOGHER(ED NOHAVAL), CLOGHERBRIEN, CLOGHERCLEMIN,
CLOGHMACKIRKEEN, CLONDOUGLAS, CLOON GLEBE, CLOONAMAN, CLOONAMETAGH,
CLOONBRANE, CLOONMACKON, CLOONMORE, CLOONNAFINNEELA, CLOONPROHUS,
CLOONTEENS, CLOONTS, CLOONTUBBRID NORTH, CLOONTUBBRID SOUTH,
CLOONYDONIGAN LOWER, CLOONYDONIGAN UPPER, COCKHILL, COMMONS EAST,
COMMONS(ED KILBONANE), COOLA CLARIG, COOLANEELIG, COOLARD, COOLATOOSANE,
COOLAVORHEEN, COOLBANE, COOLBANE EAST(KILBONANE), COOLBANE
WEST(KILBONANE), COOLBAUN(KILCREDANE), COOLBAUN(KILCUMMIN), COOLBEHA,
COOLCASLagh, COOLCORCORAN, COOLGARRIV(ED KILLARNEY RURAL),
COOLICK(KILCREDANE), COOLICK(KILCUMMIN), COOLKERAGH, COOLLEGREAN(ED MOUNT
EAGLE), COOLNAGARRAHY, COOLNAGERAGH, COOLNAGRAIGUE, COOLNALEEN UPPER,

COOLNANOONAGH, COOLROE EAST, COOLROE NORTH, COOLROE SOUTH, COOLROE WEST, COOLS(ED HEADFORT), COOLVACKAGH, COOM(ED COOM), COOM(ED MOUNT EAGLE), CORACOW, CORBALLY(ED DROMIN), CORCAS AND SANDHILLS, CORDAL EAST, CORDAL WEST, COTTAGE, CRAG(ED BALLYEGAN), CRAG(ED CASTLEISLAND), CRAG(ED O), CRAGGANE, CRINNY EAST, CRINNY WEST, CROHANE(ED AGHADOE), CROSSTOWN, CROTTA, CULLEENY BEG, CULLEENY MORE, CURRABANEFIELD, CURRACITTY, CURRAGH, CURRAGHATOUK, CURRAGHDERRIG, CURRAGHLEHA EAST, CURRAGHLEHA WEST, CURRAGHMACDONAGH, CURRAKNOCKAUN, CURRAROSS, CURRAVOGH NORTH, CURRAVOGH SOUTH, CUSS(ED NEWTOWNSANDES), DEER PARK(ED KILLARNEY RURAL), DERK, DERRA(ED BROSNA), DERRA(ED GULLANE), DERREEN(ED DERREEN), DERREEN(ED KILLARNEY RURAL), DERRINDAFF, DERRY, DICKSGROVE, DOOCARRIG BEG, DOOCARRIG MORE, DOOLAIG NORTH, DOOLAIG SOUTH, DOON EAST, DOON NORTH, DOON SOUTH, DOON WEST, DOONARD LOWER, DOONARD UPPER, DOONCAHA, DOONEEN(ED CASTLEISLAND), DOONEEN(ED KILCUMMIN), DOONEEN(ED KILLARNEY RURAL), DOONKINANE, DOONRYAN, DROM(ED DOOCARRIG), DROM(ED GULLANE), DROMADDA BEG, DROMADDA MORE, DROMADEESIRT, DROMALIVAUN, DROMAVALLY(ED KILLORGLIN), DROMBEG, DROMBRICK, DROMCLOGH, DROMCUNNIG, DROMDOOHIG BEG, DROMDOOHIG MORE, DROMIN EAST, DROMIN LOWER, DROMIN UPPER, DROMIN WEST, DROMIN(ED DROMIN), DROMIN(ED KILLEHENNY), DROMIN(ED LAHARD), DROMIN(ED LISTOWEL RURAL), DROMKERRY, DROMLEGAGH, DROMLEGAGH DEMESNE, DROMMAKEE, DROMMURHER, DROMORE(ED MOLAHIFFE), DROMROE(ED KILLEENTIerna), DROMTHACKER, DROMULTAN(ED KILLEENTIerna), DROMULTAN(ED SCARTAGLIN), DUAGH(ED DUAGH), DUNGEEL, DUNMANIHEEN, ESK, FAHA EAST, FAHA WEST, FAHA(ED GULLANE), FAHADUFF, FAHAVANE, FARRAN(ED ABBEYDORNEY), FARRANASPIG, FARRANASTACK, FARRANAWANA, FARRANKEAL, FARRANMANAGH, FARRANPIERCE, FEAVAUTIA, FIERIES(ED KILNANARE), FLINTFIELD, FOIL, FOILDARRIG, FOSSA, FREEMOUNT, FURHANE, GARRANE(ED DOON), GARRAUN BEG, GARRAUN MORE, GARRYANTANVALLY, GLANADERHIG, GLANAGEENTY, GLANAWADDRA, GLANAWILLIN, GLANBALLYMA, GLANCULLARE NORTH, GLANCULLARE SOUTH, GLANDAEAGH, GLANGRISTEEN, GLANKEAGH, GLANLAREHAN, GLANLEA, GLANNALAPPA EAST, GLANNALAPPA MIDDLE, GLANNALAPPA WEST, GLANOE, GLANOWEN, GLANSHEAROON, GLANSILLAGH, GLANTAUNLUSKAHA, GLANTAUNYALKEEN, GLASHANACREE, GLASHANANOON, GLEBE(ED BALLYHAR), GLEBE(ED KILCUMMIN), GLOURIA, GNEEVES(ED GNEEVES), GNEEVES(ED KILBONANE), GNEEVGULLIA, GORTACAPPUL, GORTACAREEN, GORTACLOGHANE(ED KILFEIGHNY), GORTACOLLOPA, GORTALASSA(ED MOLAHIFFE), GORTANAHANEBY EAST, GORTANAHANEBY WEST, GORTANIMERISK, GORTARD, GORTAREE, GORTASPIDDALE, GORTCLOHY, GORTDERRIG, GORTDROMAGOWNAGH, GORTDROMASILLAHY, GORTDROMERILLAGH, GORTGLASS, GORTNACARRIGA, GORTNAGANE, GORTNALEAHA(BALLYMACCELLIGOTT), GORTNALEAHA(O), GORTNAMUCKALY, GORTNAPROCESS, GORTNASKEHA, GORTNASKEHA COMMONS, GORTNATONA, GORTROE(ED KILLARNEY RURAL), GORTROE(ED KNOCKNAGASHEL), GORTSHANAVOGH, GORTSHANVALLY, GOWLANE(ED MOLAHIFFE), GRENAGH, GROREEN, GROIN(ED KILLARNEY RURAL), GUHARD NORTH, GUHARD SOUTH, GULLANE EAST, GULLANE MIDDLE, GULLANE WEST, GULLAUN EAST, GULLAUN WEST, GURTEENAVALLIG, GURTEENACLOONA, GURTEENROE, HEADFORT, INCHICORRIGANE EAST, INCHICORRIGANE WEST, INCHINAPOAGH, INCHINCUMMER, INCHYCULLANE, INCHYMAGILLERAGH EAST, INCHYMAGILLERAGH WEST, IRRAMORE, ISLANDBOY EAST, ISLANDBOY WEST, ISLANDBOY(ED DUAGH), ISLANDEARAGH, ISLANDMACLOUGHRY, KEALID, KEAM, KEELTIES, KILBAHA MIDDLE, KILBAHA NORTH, KILBAHA SOUTH, KILBAHA WEST, KILBANE, KILBANNIVANE, KILBEREHERT, KILBONANE, KILBREAN BEG(ED KILCUMMIN), KILBREAN BEG(ED KILLARNEY RURAL), KILBREAN MORE, KILBURN, KILCARRA BEG, KILCARRA MORE, KILCLOGHERANE, KILCOCK LOWER, KILCOCK UPPER, KILCOLGAN LOWER, KILCOLGAN UPPER, KILCOLMAN(ED ASTEE), KILCOLMAN(ED MILLTOWN), KILCONLY NORTH, KILCONLY SOUTH, KILCUSNAUN, KILDERRY NORTH, KILDERRY SOUTH, KILDUFF(ED O), KILFEIGHNY NORTH, KILFEIGHNY SOUTH, KILFENORA, KILGARVAN, KILKNEEDAN, KILLACLOHANE, KILLALEE, KILLEAGH(ED MOLAHIFFE), KILLEEN(ED KILLARNEY RURAL), KILLEEN(ED TRALEE RURAL), KILLEENTIerna, KILLELTON(ED ASTEE), KILLOMEERHOE, KILMANIHEEN EAST, KILMANIHEEN WEST, KILMEANY, KILMORE(ED O), KILMURRILY, KILMURRY(ED KILMURRY, KILNANARE, KILNAROVANAGH, KILPADDOGE, KILQUANE(ED ARABELA), KILQUANE(ED CORDAL), KILQUANE(ED DOOCARRIG), KILSARKAN EAST, KILSARKAN WEST, KILSHENANE, KINGSLAND, KNOCKACAPPUL, KNOCKACHUR, KNOCKACLARE, KNOCKACLOGHER, KNOCKACULLIG NORTH, KNOCKACULLIG SOUTH, KNOCKADERREEN, KNOCKADERRY, KNOCKAFREAGHAUN, KNOCKAGARRANE,

KNOCKAGOWNA, KNOCKALIBADE, KNOCKALOUGHA, KNOCKAMOOHANE,
 KNOCKANARROOR, KNOCKANASIG, KNOCKANE(ED LISTOWEL RURAL), KNOCKANEROE,
 KNOCKANES, KNOCKANIMRISH, KNOCKANINANE EAST, KNOCKANINANE WEST,
 KNOCKANOULORT, KNOCKANUSH EAST, KNOCKANUSH WEST, KNOCKARDTRY,
 KNOCKARIDDANE, KNOCKARIDDERA, KNOCKASARNET, KNOCKATAGGLE BEG,
 KNOCKATAGGLE MORE, KNOCKATARRIV, KNOCKATEE, KNOCKAUNATEE,
 KNOCKAUNBRACK, KNOCKAUNCORE, KNOCKAUNCURRAGH, KNOCKAUNNANOON,
 KNOCKAVALLIG, KNOCKAVINNANE, KNOCKAVOTA, KNOCKAVURRA GLEBE,
 KNOCKAWADDRA EAST, KNOCKAWADDRA MIDDLE, KNOCKAWADDRA WEST,
 KNOCKAWINNA, KNOCKBRACK EAST, KNOCKBRACK WEST, KNOCKBRACK(ED BROSNA),
 KNOCKBURRANE, KNOCKDOORAH, KNOCKDOWN, KNOCKEARAGH, KNOCKEENCREEN,
 KNOCKEENDUFF, KNOCKEENNAGOWAN, KNOCKEENNAHONE, KNOCKEENNALICKA,
 KNOCKENAGH NORTH, KNOCKENAGH SOUTH, KNOCKMANAGH(ED COOM),
 KNOCKMANAGH(ED KILLARNEY RURAL), KNOCKMEAL, KNOCKNABOUL,
 KNOCKNACAHERAGH, KNOCKNACASKA, KNOCKNACROHY, KNOCKNACURRA,
 KNOCKNADARRIV, KNOCKNAGASHEL EAST, KNOCKNAGASHEL WEST, KNOCKNAGEEHA,
 KNOCKNAGLOGH, KNOCKNAGOUM, KNOCKNAGUN, KNOCKNAHAHA, KNOCKNAHILA,
 KNOCKNAHOE, KNOCKNAKILLY, KNOCKNAMAN, KNOCKNAMUCKLAGH, KNOCKNASEED,
 KNOCKNASKEHA, KNOCKOGNOE, KNOCKREAGH(ED BALLYHORGAN), KNOCKREAGH(ED
 CARKER), KNOCKREAGH(ED DROMIN), KNOCKREAGH(ED TUBRID), KNOCKROWER EAST,
 KNOCKROWER WEST, KNOCKUNDERSVAUL, KNOCKYEALA, KNOCKYSHEEHAN,
 KNOPPOGE(ED AGHADOE), KNOPPOGE(ED GNEEVES), KYLATALLIN, KYLEBEG, KYLEBWEE,
 LACKA BEG, LACKA EAST(ED KILMEANY), LACKA EAST(ED URLEE), LACKA MORE, LACKA
 WEST(ED TRIENEARAGH), LACKA WEST(ED URLEE), LACKABANE(ED KILLARNEY RURAL),
 LACKABANE(ED MOUNT EAGLE), LACKABAUN, LACKABOY, LACKANONEEN, LACKBROODER,
 LAHARAN(ED AGLISH), LAHARAN(ED DOON), LAHARAN(ED KILBONANE), LAHARD,
 LAHARDANE, LAHESHERAGH NORTH, LAHESHERAGH SOUTH, LARHA(ED ASTEE), LEAHA,
 LEAMNAGUILA, LEAMPREAGHANE, LEAMYDOODY, LEAMYGLISSANE(AGHADOE),
 LEAMYGLISSANE(KILCUMMIN), LEANAMORE, LEANSAGHANE, LEATH EAST, LEATH WEST,
 LECARHOO, LEITRIM EAST, LEITRIM MIDDLE, LEITRIM WEST, LETTER(ED ASTEE), LISBABE,
 LISCAHANE, LISHEEN, LISHEENNACANNINA, LISHEENNASHINGANE, LISLAUGHTIN,
 LISLOOSE, LISMACFINNIN, LISMORE, LISNAGRAVE, LISROE(ED DUAGH), LISROE(ED
 KILCUMMIN), LISSAHANE, LISSANEARLA EAST, LISSANEARLA WEST,
 LISSANISKA(NEWTOWNSANDES), LISSATANVALLY, LISSAVANE EAST, LISSAVANE WEST,
 LISSIREEN, LISSOOLEEN, LISSYCONNOR, LISSYVIGGEEN, LISTELICK NORTH, LISTELICK
 SOUTH, LISTOWEL, LISTRIM (ED CLOGHERBRIEN), LISTRIM(ED BALLYNAHAGLISH), LISTRY,
 LONGFIELD, LYRACRUMPANE, LYRE(ED KILLEENTIERNA), LYRE(ED KILMURRY), LYRE(ED
 LISSELTON), LYRE(ED MILLTOWN), LYRES, MAGHANKNOCKANE, MAGLASS WEST, MANOR
 EAST, MARTARA(ED CARRIG), MASTERGEEHA, MAUGHANTOORIG, MAULAGH,
 MAULYARKANE, MAULYKEAVANE, MAUSROWER, MEELCON, MEEN, MEENANARE,
 MEENBANNIVANE, MEENLEITRIM NORTH, MEENLEITRIM SOUTH, MEENNAGISHAGH,
 MEENNAHORNA, MEENSCOVANE, MEENTOGES, MEENYVOUGHAUN, MILLTOWN(ED
 ABBEYDORNEY), MILLTOWN(ED MILLTOWN), MINISH, MOHER, MONTANAGAY, MOOHANE,
 MOUNTCOAL, MOUNTHENRY, MOYASSA, MOYNSHA, MOYVANE NORTH, MOYVANE SOUTH,
 MUCKENAGH(ED BALLYHORGAN), MUING WEST, MUINGATLAUNLUSH, MUINGAVRANNIG,
 MUINGNAMINNANE, MUINGNATEE, MUINGVAUTIA, MUINGWEE, MULLAGHMARKY, MULLEN,
 MURHER, MWEELINROE, MWEENNALAA, NANTINAN, NOHAVAL NORTH, NOHAVAL SOUTH,
 NUNSTOWN, OLDFORGE, PALLAS, PALLIS, PARK, PARKAVONEAR, PARKBOY, PARKEARAGH,
 PARKNASMUTTAUN, PATCH, PILGRIMHILL, PINURE, POLLAGH, PORTDUFF, POTALEY,
 PULLEEN, RACOMANE EAST, RACOMANE WEST, RADRINAGH, RAHANANE, RAHAVANIG,
 RAHEEN(ED DOOCARRIG), RAHEEN(ED HEADFORD), RALAPPANE, RANALEEN, RANALOUGH,
 RATASS, RATH BEG(ED RATHMORE), RATHANNY, RATHEA, RATHKENNY, RATHMORE(ED O),
 RATHMORE(ED RATHMORE), RATHORAN, REA(ED ABBEYDORNEY), REA(ED KILMEANY),
 REABOY, REACASHLAGH(ED MOUNT EAGLE), READRINAGH, REANAGOWAN, REANASUP,
 REAVAUN, REENTURK, ROCKFIELD, ROCKFIELD EAST, ROCKFIELD MIDDLE, ROCKFIELD
 WEST, ROSNACARTAN BEG, ROSNACARTAN MORE, ROSSANEAN(KILLEENTIERNA),
 ROSSANEAN(MOLAHIFFE), ROSSMORE, RUSHEEN(ED CARRIG), RUSHEEN(ED KILNANARE),
 RUSHEEN(ED MOLAHIFFE), RUSHEENPARK, RYLANE, SCART(ED KILCUMMIN), SCARTAGLIN,
 SCARTEEN(ED KILLARNEY RURAL), SCRAHAN, SCRAHANAGULLAUN, SCRAHANAVEAL,
 SCRAHANFADDA, SEERSHA, SHANACOO, SHANAFONA, SHANAKNOCK(ED O), SHANAWAY
 EAST, SHANAWAY WEST, SHANAWILLEN, SHANBALLY, SHEANS EAST, SHEANS WEST,
 SHINNAGH(ED RATHMORE), SHRONE BEG, SHRONE MORE, SHRONE(ED LISLAUGHTIN),

SHRONE(ED ROCKFIELD), SHRONEBEIRNE, SHRONEDARRAGH, SKAHIES, SKEHANIERIN (STOKES), SKEHANIERIN LOWER, SKEHANIERIN(EGAN), SLIEVEGAURA, SLIEVENAVADOGE, SLISS, SLUICEQUARTER, STACK-MOUNTAIN, STAGMOUNT, STEALROE, TARBERT, TARMON EAST, TARMON WEST, TARMONHILL, TAWLAGHT(ARDFERT), TEERNABOUL, TIERACLEA LOWER, TIERACLEA UPPER, TINNAHALLY, TOBERATOOREEN, TONREAGH LOWER, TONREAGH UPPER, TOOR(ED TRIENEARAGH), TOOREEN(ED ABBEYDORNEY), TOOREEN(ED NOHAVAL), TOOREEN(ED TRIENEARAGH), TOOREENAGOWAN, TOOREENARD, TOOREENASTOOKA, TOOREENCAHILL, TOOREENGARRIV, TOOREENMORE(ED KNOCKNAGASHEL), TOOREENNABLAUHA, TOOREENNAMULT, TOOREENNASCARTY, TOORMORE, TOORNAGEEHY, TOORNANAUNAGH, TOORNANOULAGH, TRIEN, TRIENEARAGH, TRIPPEENAGH, TRIPPUL EAST, TRIPPUL WEST, TUBRID BEG, TUBRID MORE, TULLA BEG, TULLA MORE(ED GULLANE), TULLAGUBBEEN, TULLAHENNEL NORTH, TULLAHENNEL SOUTH, TULLAMORE(ED SHRONOWEN), TULLIG(ED KILFEIGHNY), TULLIG(ED KILLARNEY RURAL), TULLORUM, TULLYGARRAN, TURSILLAGH, TYLAGH, URLEE

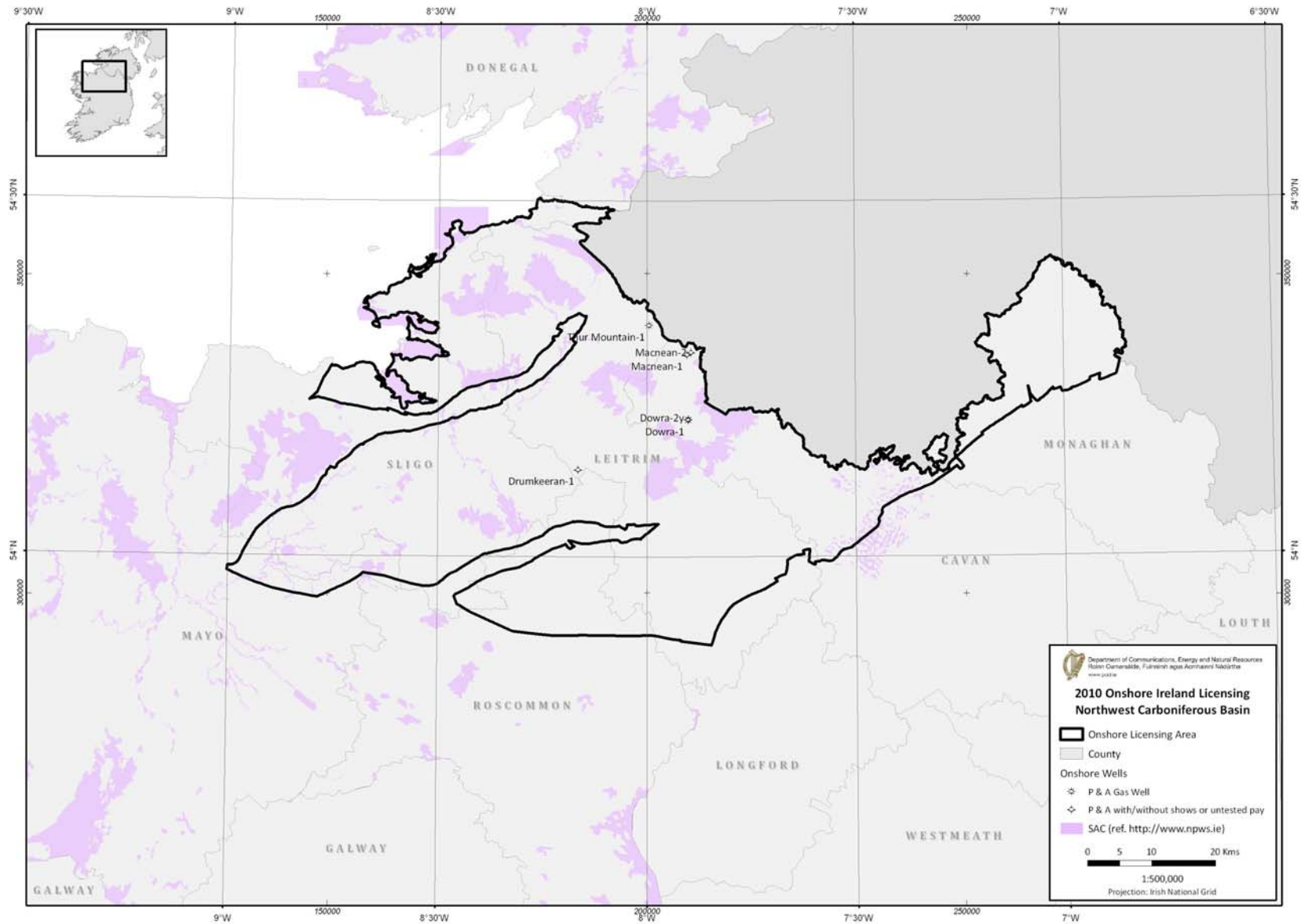
COUNTY LIMERICK TOWNLANDS

ABBEYFEALE EAST, ABBEYFEALE WEST, ACRES, ATHEA LOWER, ATHEA UPPER, BALLAGH, BALLAGHBEHY, BALLAGHBEHY NORTH, BALLAGHBEHY SOUTH, BALLINLOUGHANE (ED ROOSKAGH), BALLINREE, BALLYANE, BALLYCORMICK, BALLYCULLANE LOWER, BALLYCULLANE UPPER, BALLYDONOHOE (ED GLIN), BALLYGILTENAN LOWER, BALLYGILTENAN NORTH, BALLYGILTENAN UPPER, BALLYGOGHLAN, BALLYHAHILL (ED LOGHILL), BALLYHOOLAHAN, BALLYINE, BALLYKEALY, BALLYKENNY, BALLYLIN (ED ARDAGH), BALLYMURRAGH EAST, BALLYMURRAGH WEST, BALLYNABEARNA, BALLYNACRAGGA, BALLYNACRAGGA NORTH, BALLYNACRAGGA SOUTH, BALLYNAGAUL, BALLYNAMUDDAGH (ED GLIN), BALLYNASH (BISHOP), BALLYNASH (CLARE), BALLYPIERCE, BALLYROE, BALLYVOGHAN, BANEMORE (ED MOUNTPLUMMER), BARNAGARRANE, BAURANEAG, BOOLA, BOUGHILBO, BRISKAGH, CAHER (CONNELL), CAHER (HAYES), CAHER (LANE), CAHERAGH, CAHERLEVOY, CAHERMOYLE, CAHERNAGH, CARRIGKERRY, CARROWARD EAST, CARROWARD WEST, CARROWBANE BEG, CARROWBANE MORE, CLASH NORTH, CLASH SOUTH, CLEANGLASS NORTH, CLEANGLASS SOUTH, CLOONLAHARD EAST, CLOONLAHARD WEST, CLOONOUGHTEER, CLOONTY, CLOONYCLOHASSY, COMMONS (ED ARDAGH), COOL EAST, COOL WEST, COOLALEEN, COOLNANOGLAGH, CORBALLY (ED DUNMOYLAN EAST), CORGRIG, COURT (ED GLIN), CRAG, CRATLOE EAST, CRATLOE WEST, CREAN (ED MONAGAY), CROAGHANE, CURRA BEG, CURRA MORE, DARRERY, DERREEN (ED KILMOYLAN), DOONAKENNA, DOONCAHA, DOONSKERDEEN, DROMADA, DROMAGARRAUN, DROMDEEVEEN, DROMREASK, DROMROE (ED GLENGORT), DROMTRASNA (COLLINS), DROMTRASNA (HARTNETT), DROMTRASNA NORTH, DROMTRASNA SOUTH, DUNGANVILLE UPPER, FARRANMILLER, FARRIHY, FINNOO, FLEAN BEG, FLEAN MORE, GARRYDUFF (ED GARRYDUFF), GLASHAPULLAGH, GLENAGOWER, GLENAGRAGARA, GLENASTAR, GLENBAUN, GLENDARRAGH, GLENDIHEEN, GLENDUFF, GLENGORT NORTH, GLENGORT SOUTH, GLENMORE EAST, GLENMORE WEST, GLENNAGOWN, GLENQUIN (ED GLENGORT), GLENQUIN (ED MONAGAY), GLENQUIN SOUTH, GLENSHARROLD, GLENVILLE, GLIN DEMESNE, GORTADROMA, GORTEENS, GORTNACLOHY, GORTNAGROSS, GORTNASKEHY, GROUSELODGE, KEALE (ED RATHRONAN), KELLS, KERRIKYLE, KILFERGUS, KILKINLEA LOWER, KILKINLEA UPPER, KILLACOLLA (BARKER), KILLACOLLA (ED FLEANMORE), KILLACULLEEN, KILLEANY BEG, KILLEANY MORE, KILLEEDY SOUTH, KILTEERY, KIMEHEER, KINARD, KNOCKACLUGGA, KNOCKACRAIG, KNOCKAUNNAGUN, KNOCKBRACK, KNOCKBWEHEEN, KNOCKCOOLKEARE, KNOCKDOWN, KNOCKFINNISK, KNOCKGLASS, KNOCKNABOHA, KNOCKNABOOLY EAST, KNOCKNABOOLY MIDDLE, KNOCKNABOOLY WEST, KNOCKNADIHA, KNOCKNAGORNAGH, KNOCKNASNAA, KNOCKPATRICK, KNOCKTOOSH, LACKA LOWER, LACKA UPPER, LEAHYS, LISGORDAN, LISREADY (CLARE), LISREADY (CRIPPS), LISSURLAND, LOGHILL (ED LOGHILL), MAURICETOWN, MEENYLINE NORTH, MEENYLINE SOUTH, MOHERNAGH, MOIG, MONEYMOMHILL, MOUNTCOLLINS, MOUNTDAVID, MOUNTPLUMMER, MOUNTTRENCHARD, MOYREEN, PARK (ED DUNMOYLAN WEST), PORT (ED PORT), RATHCAHILL EAST, RATHCAHILL WEST, REANAGILLEE COMMONS, ROOSKAGH EAST, ROOSKAGH WEST, SEECONGLAS, SHANAGOLDEN, SHANAGOLDEN DEMESNE, SHANID LOWER, SHANID UPPER, SROOLANE, SUGARHILL, TEMPLEATHEA EAST, TEMPLEATHEA WEST, TEMPLEGLENTAN EAST, TEMPLEGLENTAN WEST, TINNAKILLA, TOORADOO, TOORAREE LOWER, TOORAREE UPPER, TOOREENDONNELL, TOOREENNAGREANA, TOORNAFULLA, TULLAHA, TULLIGOLINE NORTH, TULLIGOLINE SOUTH, TULLYGLASS, TULLYLEAGUE, WOODFIELD

Attachment II:

Area Maps for 2010 Onshore Petroleum Licensing

Northwest Carboniferous Basin



Clare Basin

